

# THE SOCIAL CONTRIBUTION OF INDEPENDENT SCHOOLS IN AUSTRALIA

ISQ State Forum

Friday 2 June 2023

Mark McCrindle

# THE SOCIAL CONTRIBUTION OF INDEPENDENT SCHOOLS IN AUSTRALIA

For the purpose of this project, social contribution has been defined as “the positive effect an organisation has on its stakeholders and members, and on the broader community.”

# ABOUT ISA

Independent Schools Australia is the peak body for Independent schooling in Australia. Its members are the eight state and territory Associations of Independent Schools.

ISA's key role is to advocate for the independent school sector at the national level.

## RESEARCH OBJECTIVES

- Understand the ways Independent schools serve their local, national and global communities and the social benefit they provide
- Recognise and articulate the positive impact Independent schools have on students, parents and families
- Explore the experiences of Independent school graduates and their contribution to society after their education.



# METHODOLOGY

This report is the collation of quantitative data, qualitative data and additional data sourced through Independent Schools Australia, McCrindle and Cardus Education Survey Australia.

Two surveys were conducted as part of this research undertaking.

1. The Parents Insights Survey, was an online survey of 1,047 parents with a child/children attending an Independent school.
2. The School Insights Survey, was a sample of 233 schools distributed to Independent schools across Australia through the state and territory Independent school associations.

Six in-depth interviews with school leaders were also conducted. These insights are communicated in the case studies presented in the report.

# SUMMARY OF RESEARCH

- Developing **global citizens**
- **National contribution** of independent schools
- **Community** engagement
- Partnerships between **schools and families**
- The **holistic development** of students



**Simon Holland** ✓  
@simoncholland

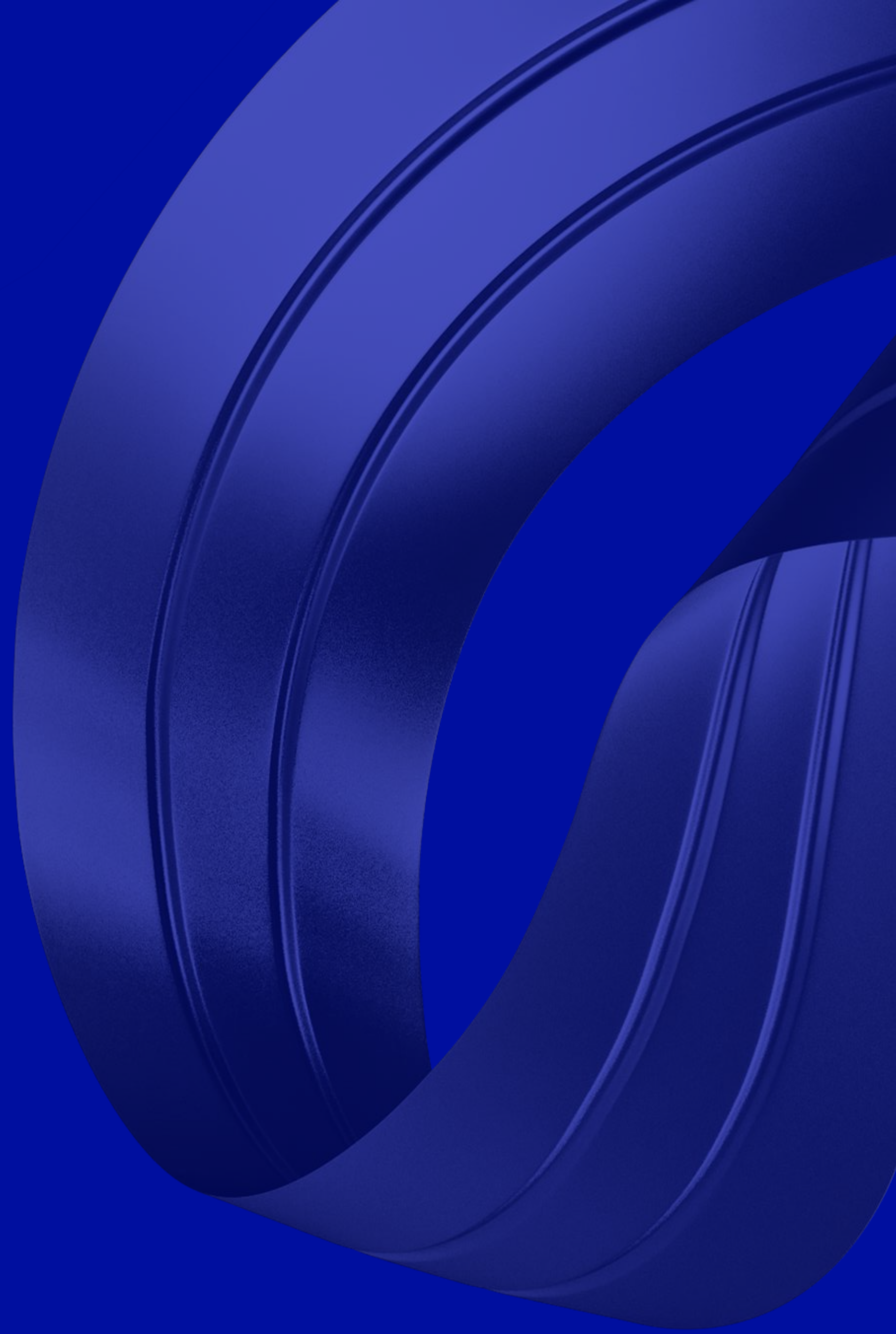


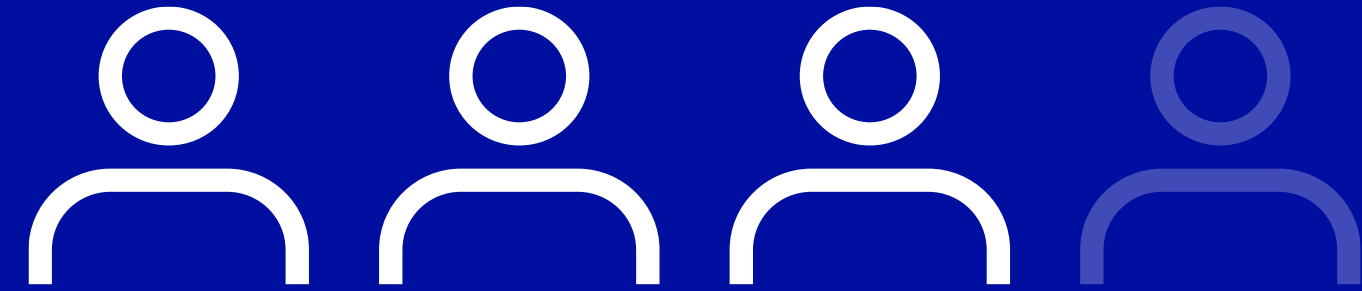
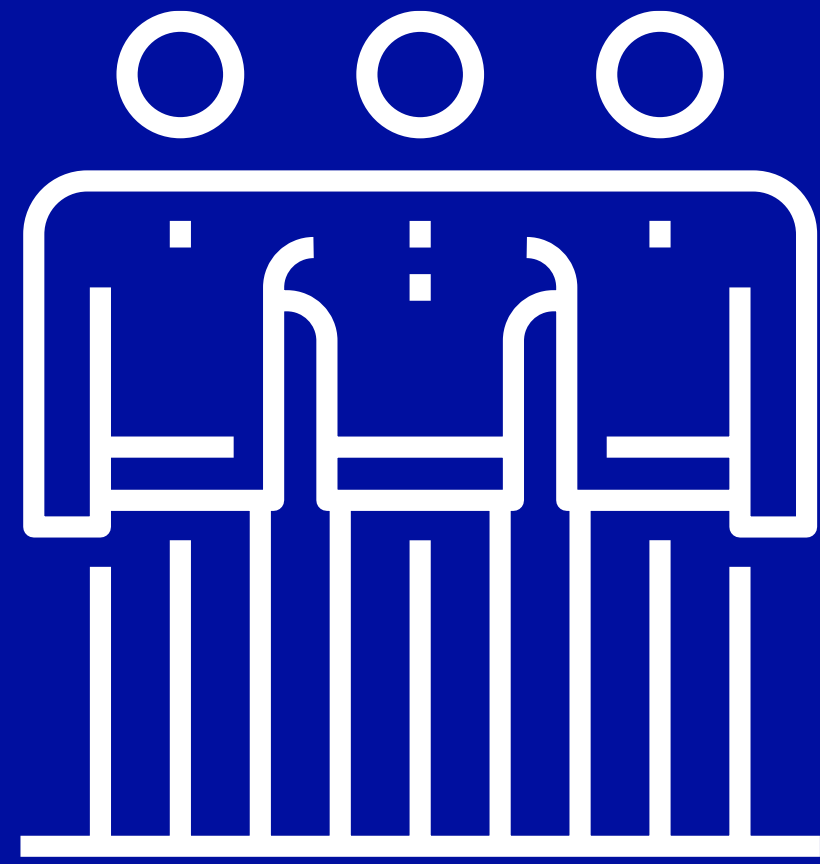
Don't know about y'all but I could really go for some unprecedented times.





# DEVELOPING GLOBAL CITIZENS





Three in four Independent school parents (74%) credit their schools as being **extremely or very intentional** in developing acceptance, respect and inclusivity among their students.







“

**The age at which we're exposed to a new technology or transformative event determines how embedded it will be in our psyche and lifestyle.**

— Generation Alpha, McCrindle Pg 109



Google



YouTube



TikTok



[HOME](#) > [TECH](#)

## Nearly half of Gen Z is using TikTok and Instagram for search instead of Google, according to Google's own data

Samantha Delouya Jul 13, 2022, 12:48 PM



Download the app





Hey google...





**“My husband asked me why I spoke so softly in the house. I said I was afraid Mark Zuckerberg was listening.**

**He laughed.  
I laughed.  
Alexa laughed.  
Siri laughed.”**

“

**Even in the future, the most valuable skills will be distinctively human ones.**

— McCrindle, *Seven Disruptors Impacting the Future of Education*, 2023

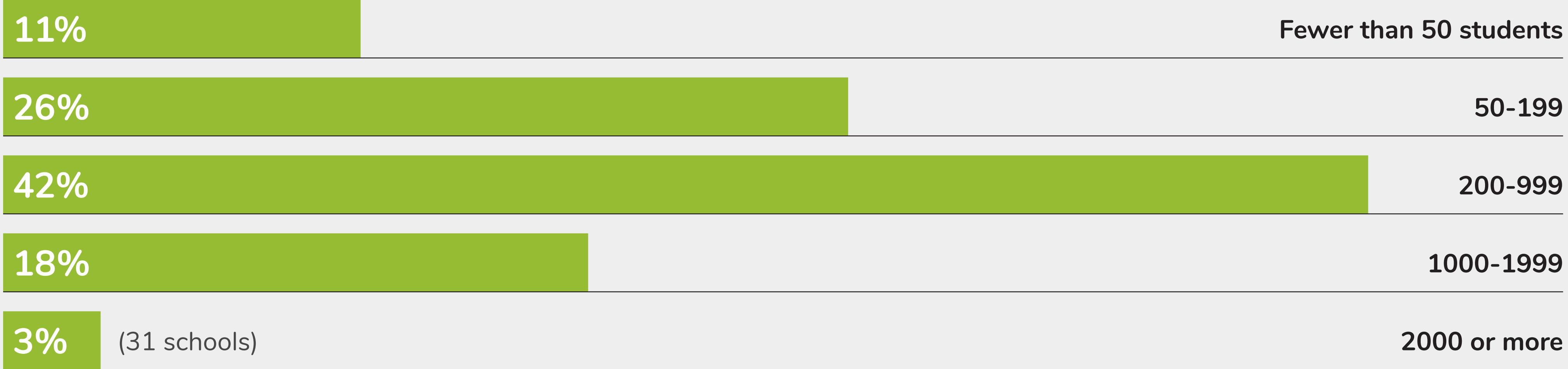


# INDEPENDENT SCHOOLS CONTRIBUTE TO EDUCATION NATIONALLY





# INDEPENDENT SCHOOLS RANGE IN SIZE





Population

**26m**

Increase over 5 years

**2m**

Growth rate

**8.6%**



# Growth locations





# Largest growing LGAs

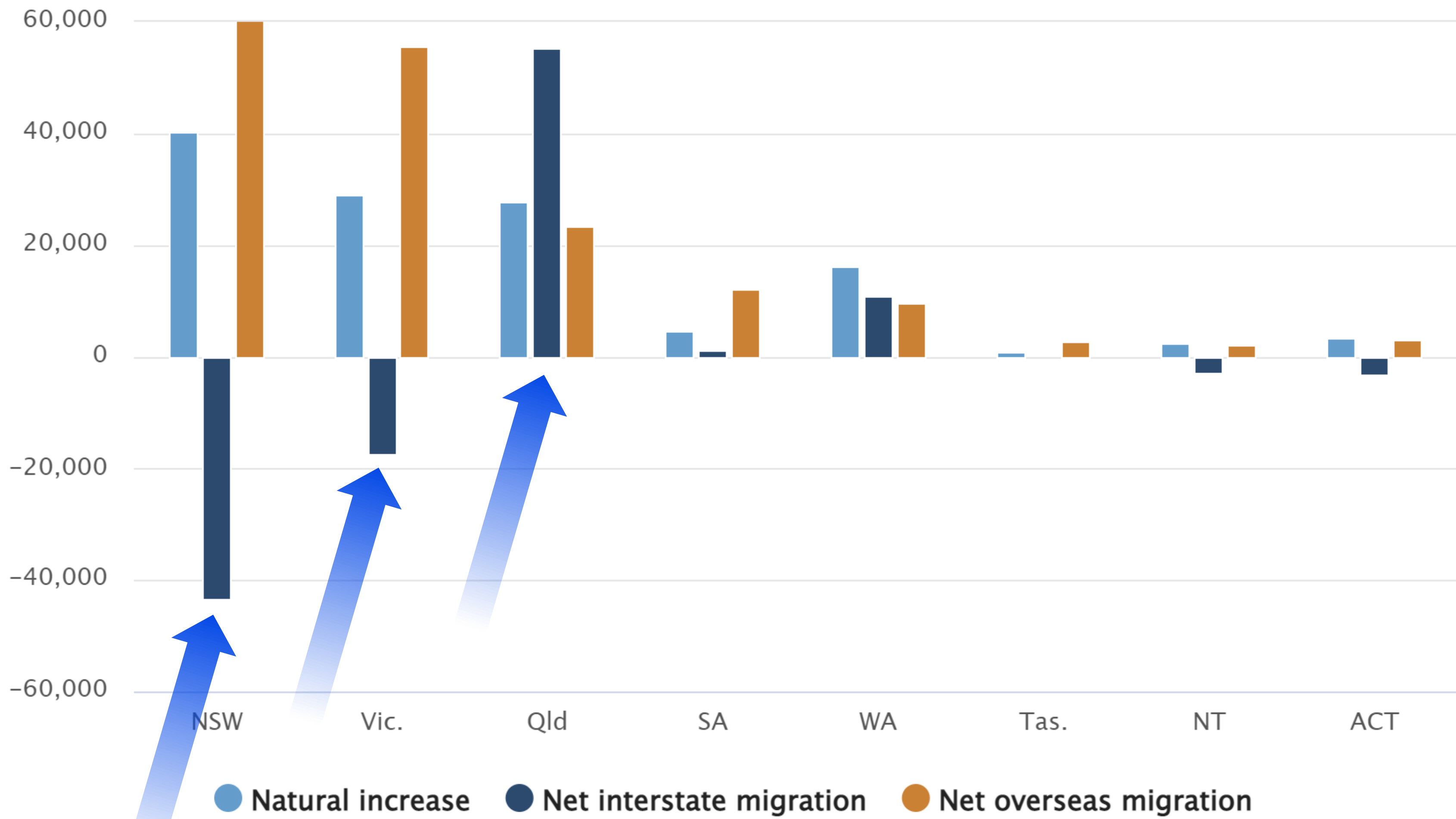
States	LGA	2016	2021	5yr	%
Queensland	Brisbane	1,131,155	1,242,825	111,670	10%
Victoria	Wyndham	217,122	292,011	74,889	34%
Queensland	Gold Coast	555,721	625,087	69,366	12%
Victoria	Casey	299,301	365,239	65,938	22%
New South Wales	Blacktown	336,962	396,776	59,814	18%
Queensland	Moreton Bay	425,302	476,340	51,038	12%
Queensland	Sunshine Coast	294,367	342,541	48,174	16%
Victoria	Hume	197,376	243,901	46,525	24%
Victoria	Melton	135,443	178,960	43,517	32%
Queensland	Logan	303,386	345,098	41,712	14%

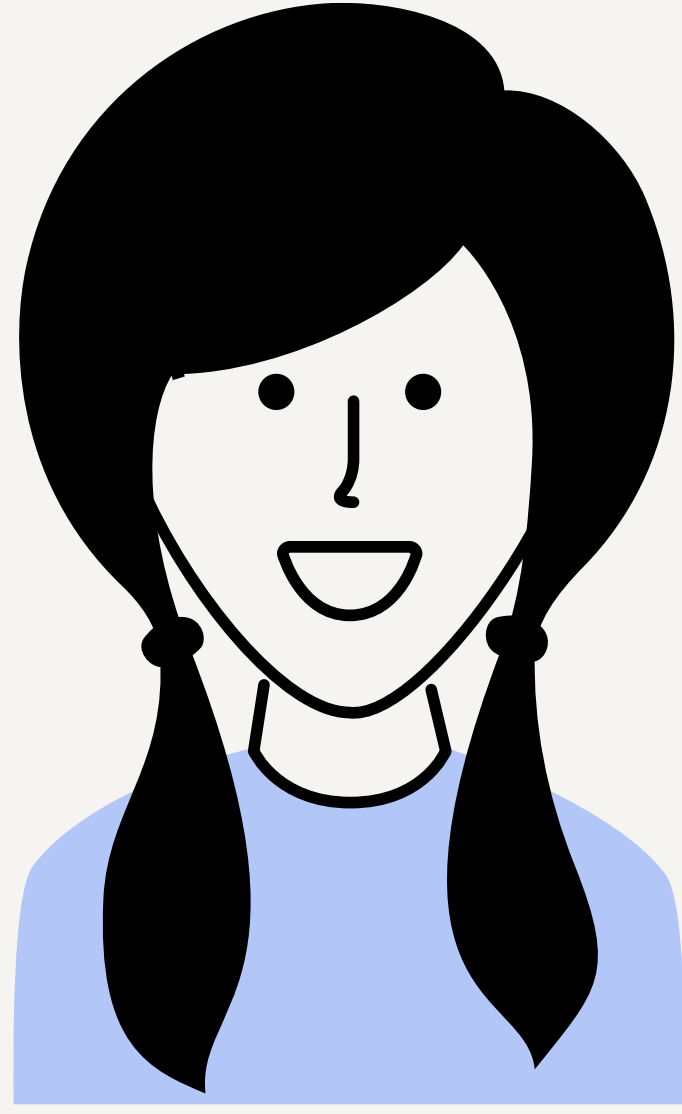
# Largest growing LGAs

States	LGA	2016	2021	5yr	%
Queensland	Brisbane	1,131,155	1,242,825	111,670	10%
Victoria	Wyndham	217,122	292,011	74,889	34%
Queensland	Gold Coast	555,721	625,087	69,366	12%
Victoria	Casey	299,301	365,239	65,938	22%
New South Wales	Blacktown	336,962	396,776	59,814	18%
Queensland	Moreton Bay	425,302	476,340	51,038	12%
Queensland	Sunshine Coast	294,367	342,541	48,174	16%
Victoria	Hume	197,376	243,901	46,525	24%
Victoria	Melton	135,443	178,960	43,517	32%
Queensland	Logan	303,386	345,098	41,712	14%

# Qld receives interstate migrants

Components of annual population growth





**Gen Z**

**Kids  
In  
Parents  
Pockets  
Eroding  
Retirement  
Savings**





More than four in five Independent schools (85%) who participated in the recent School Insights Survey, provide scholarships or bursaries to students in need, many of whom are Aboriginal and Torres Strait Islander students, students from low socioeconomic backgrounds and families facing financial hardship.



More than three out of five of majority Aboriginal and Torres Strait Islander student schools (63%) are in remote areas across Australia.

“

The entire concept of learning on-country in partnership with the local Aboriginal community is innovative in Australian education. [Our] students remain connected to their family and culture while being offered a world class, innovative delivery of curriculum. This has resulted in exponential growth of enrolments and attendance rates never before seen in the Northern Territory. It is a shining example of how education can be successful for First Nations students.

**ANNELISE PEARCE**

Operations Manager, Dhupuma Barker, NT

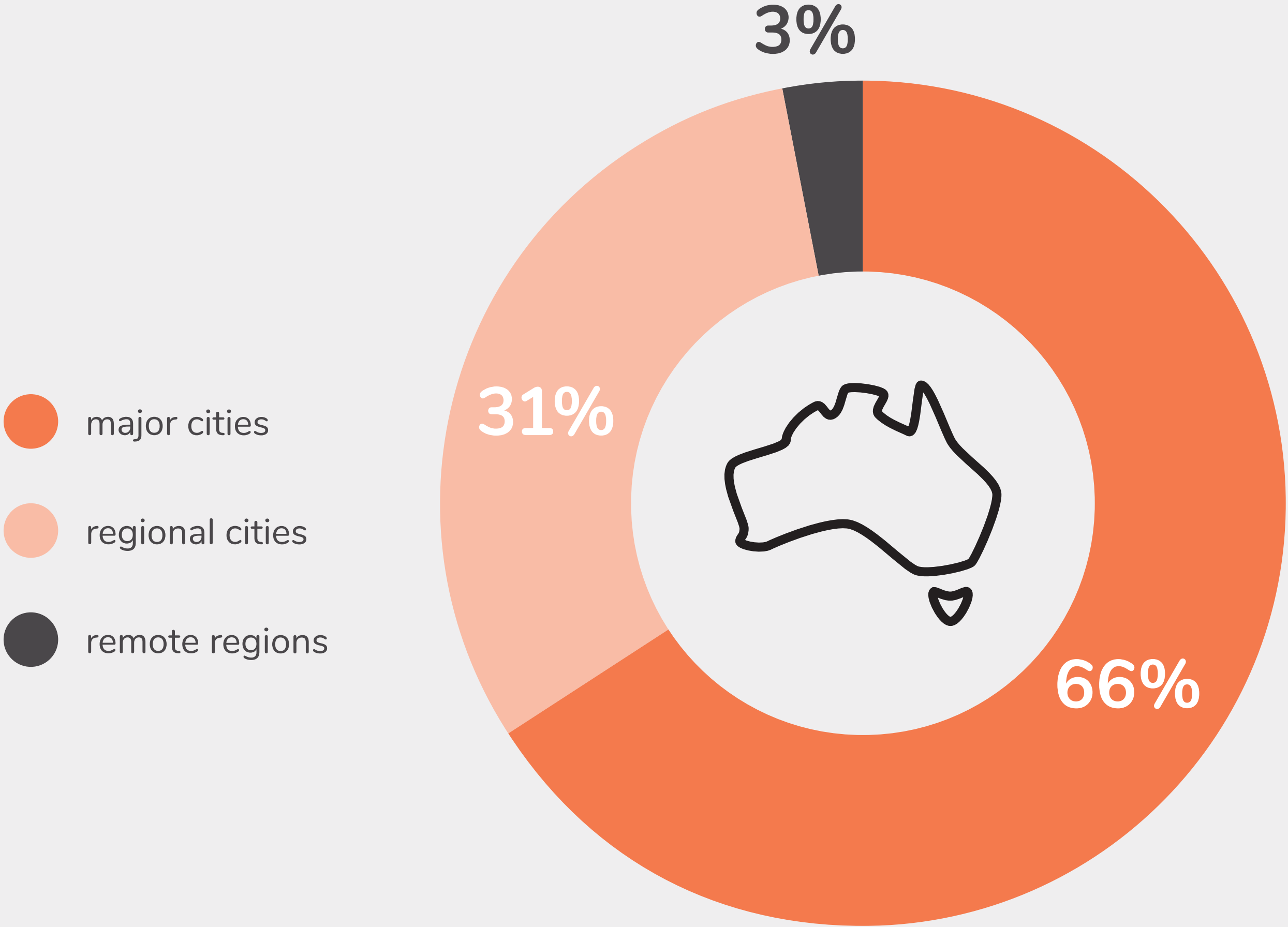




# SOCIAL CONTRIBUTION THROUGH COMMUNITY ENGAGEMENT



# INDEPENDENT SCHOOLS ARE SERVING COMMUNITIES ACROSS AUSTRALIA



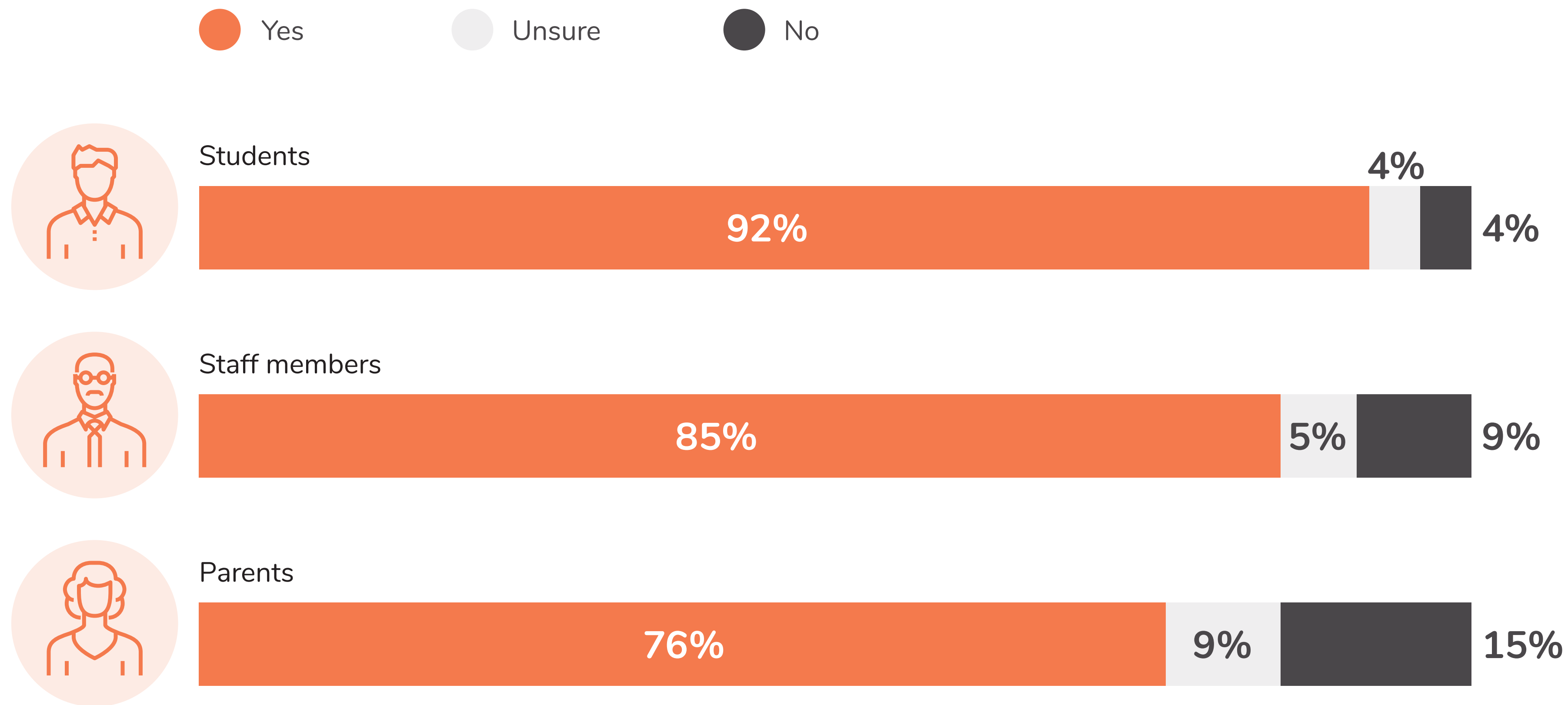


Two in five Independent school graduates (42%) report having volunteered in the last 12 months.



# DOES YOUR SCHOOL ENCOURAGE THE FOLLOWING STAKEHOLDERS TO VOLUNTEER THROUGH ANY PROGRAMS OR INITIATIVES?

% of Independent schools

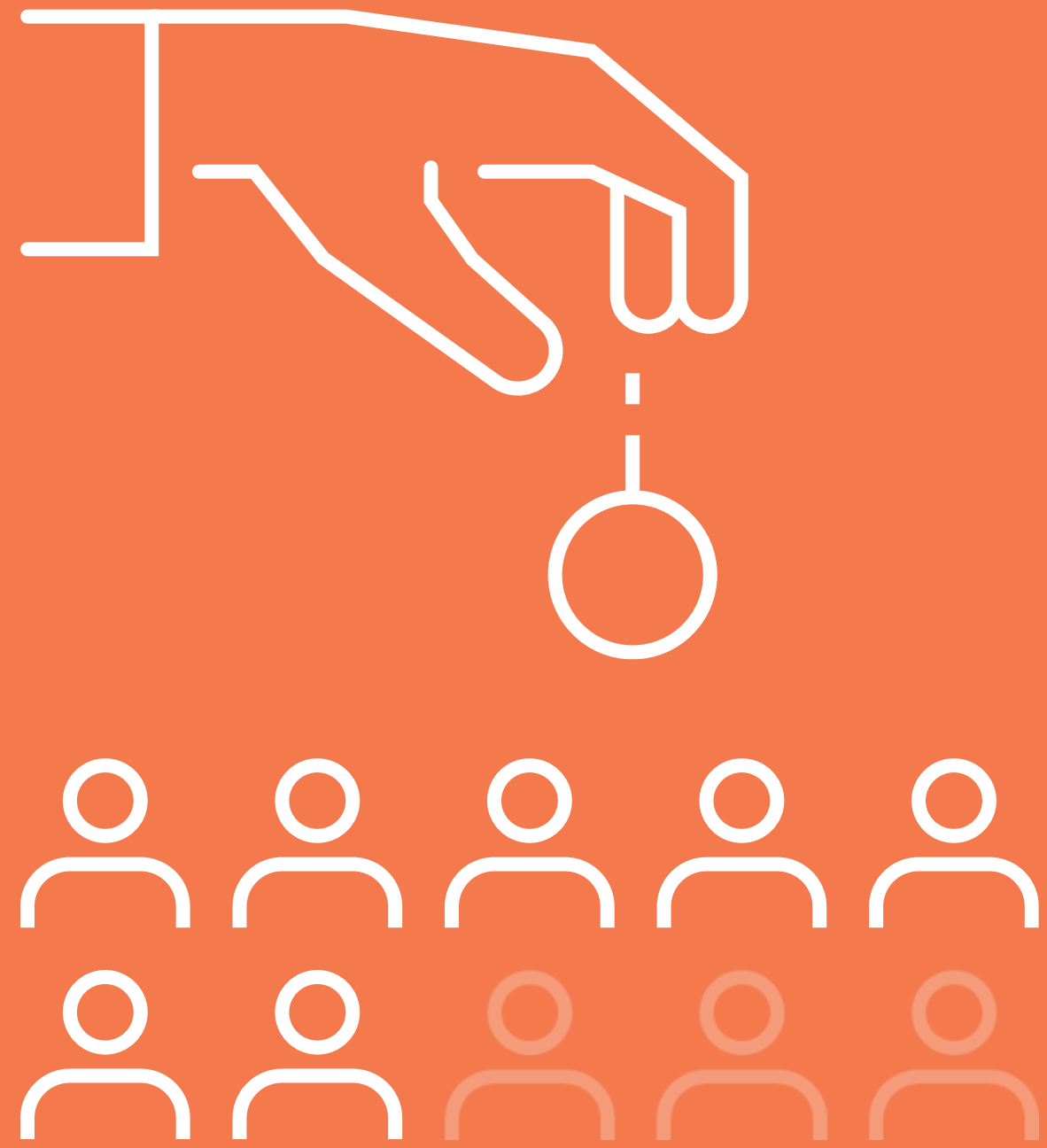


“

Children at The Launceston Preparatory School are constantly provided with opportunities for the practice of good citizenship not just the theory. This is achieved through immersion in community activities, such as, visiting homes for the elderly, assisting organisations in their charity work, sponsoring a child in Malawi and many other real-life experiences in our local community.

**LEONIE MCNAIR & HARRIET THYNE**

Co-Principals at The Launceston Preparatory School



Seven in ten Independent school graduates (70%) have donated money or goods to a non-profit, charitable organisation in the past 12 months.



# WHICH OF THE FOLLOWING DOES YOUR SCHOOL ACTIVELY SUPPORT THROUGH VOLUNTEERING AND/OR FUNDRAISING?

% of Independent schools – Top 5

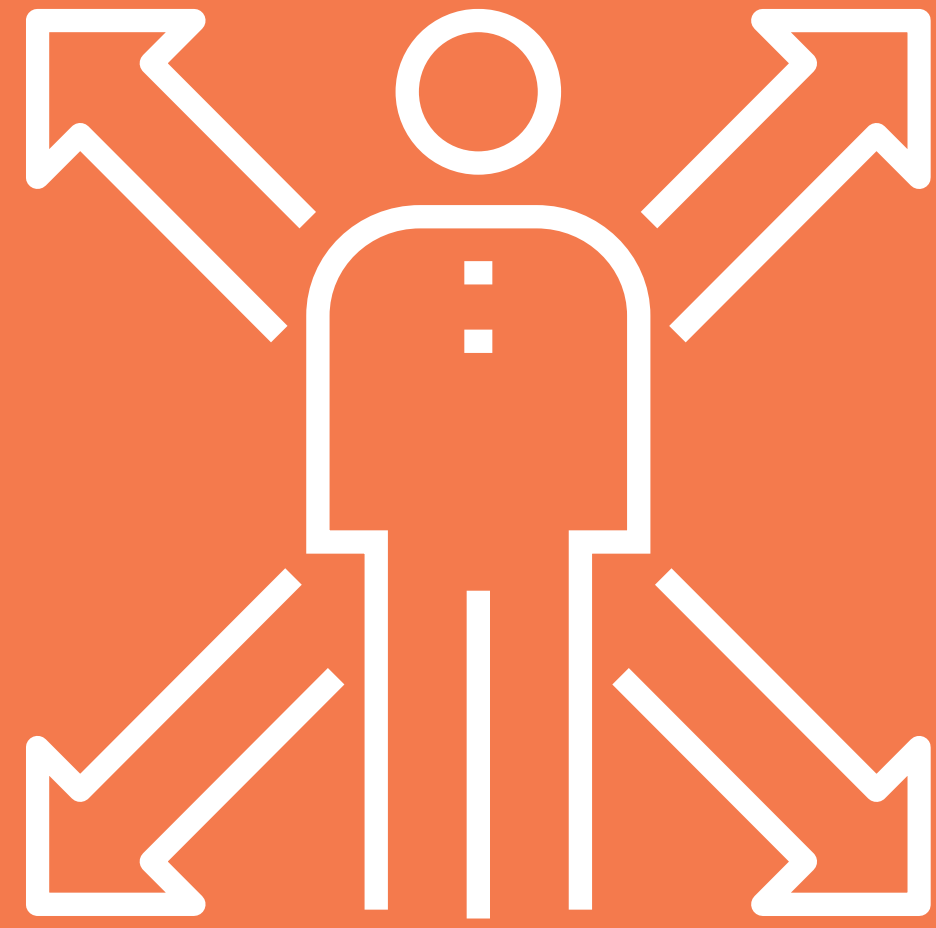


“

Kairos Community College is one of the unsung heroes in our community, changing the direction of the lives of young people, their families and the wider community. The staff are certainly deserving of this recognition of their efforts.

**ANDREW WALLACE MP**

Federal Member of Parliament at the Fisher Community Awards Night 2022, in which Kairos Community College was recognised as the winner of the Educator of the Year Award



Four in five (80% strongly/somewhat)  
Independent school parents agree their child's  
school encourages them to become more  
active citizens and contributors to society.



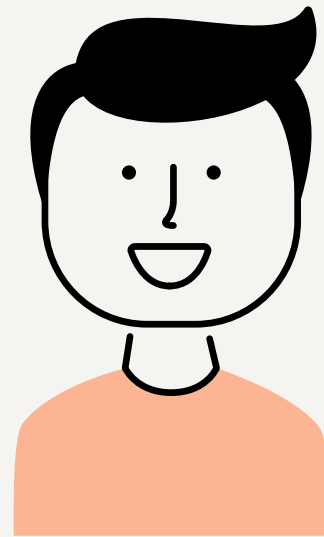
“

When something is student led, there is a sense of ownership and responsibility. When students take ownership of their learning, they're going to pour their heart and soul into it. We want to empower them to know that they can be the change – and we want to teach them that from a young age.

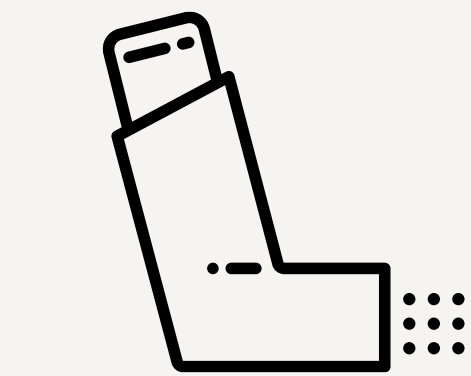
**MATTHEW PANAYOTOPOULOS**

Director of Learning at St Euphemia College

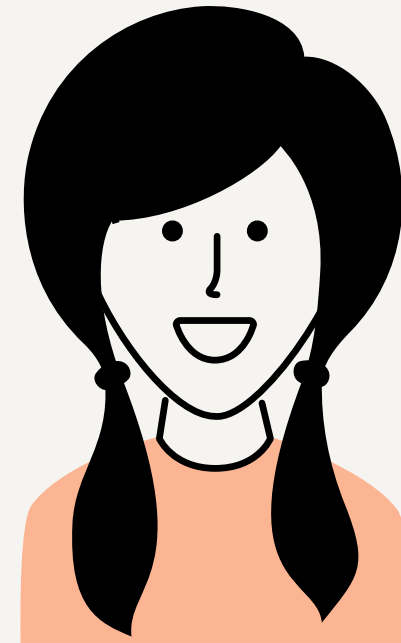
# Top long-term health conditions by age



0-14 year olds



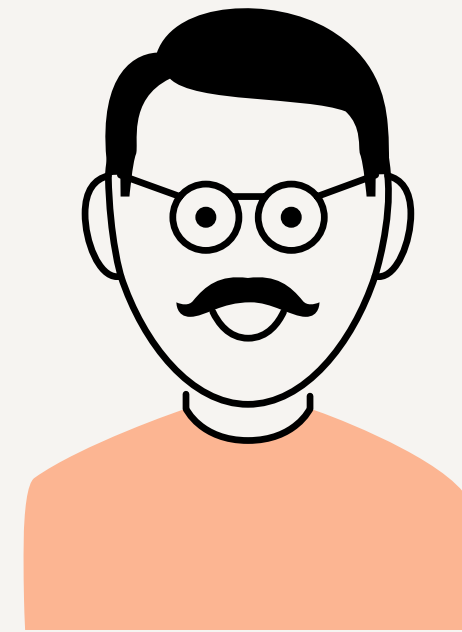
**Asthma**



15-34 year olds



**Mental health conditions**



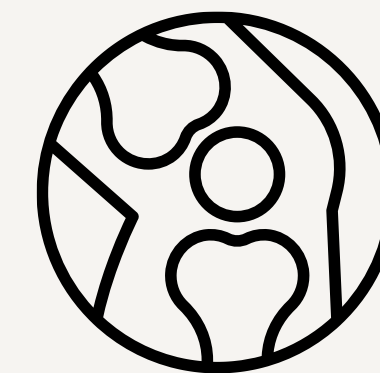
35-64 year olds



**Mental health conditions**



65+ year olds



**Arthritis**



**56%**

*of Australians often/sometimes  
feel lonely*



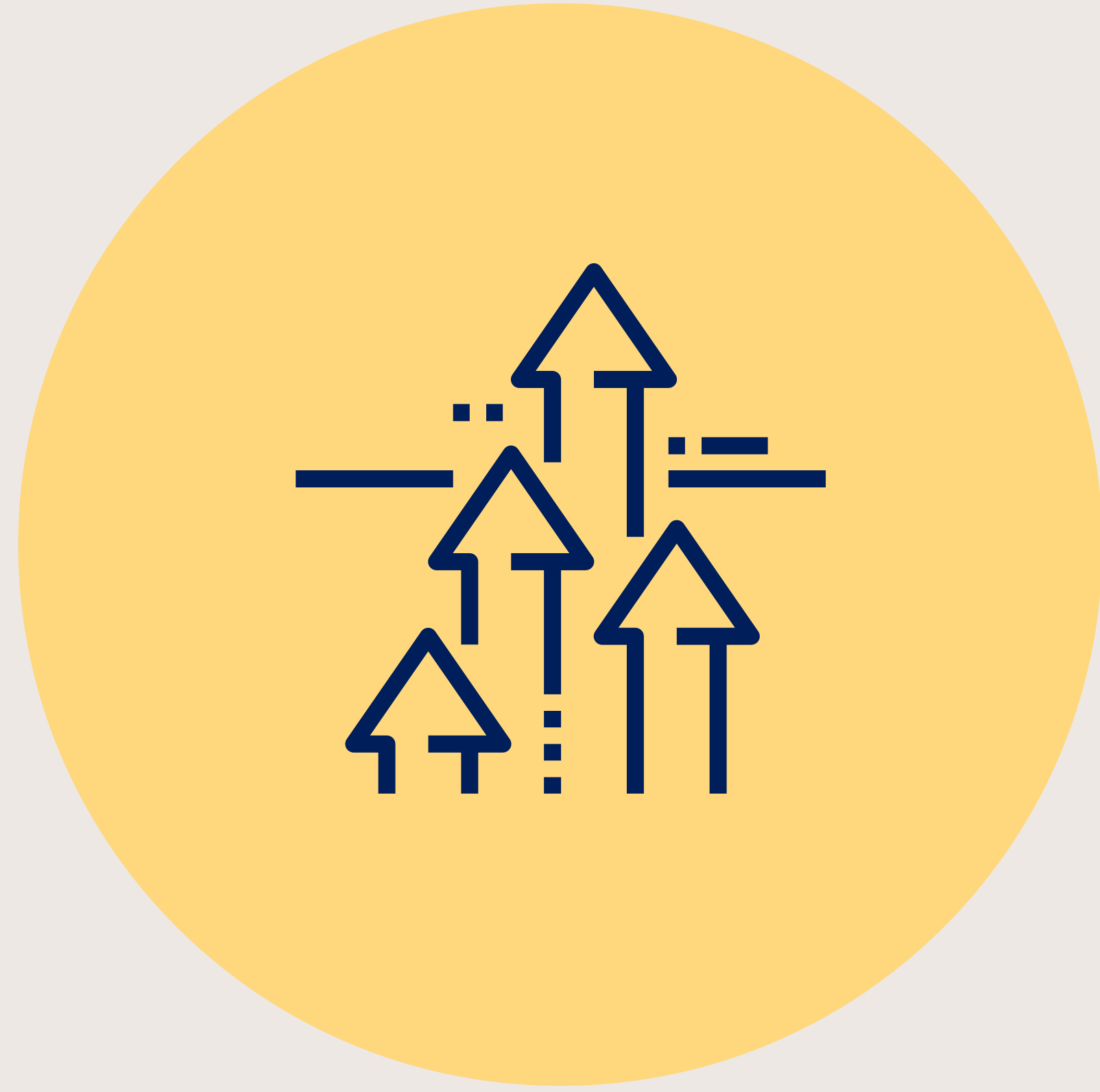


# 75%

*of Gen Z often/sometimes  
feel lonely*



**Diversity**



**Unity**



**Diversity**

**Unity**

**COMMUNITY**

**'Could you fax over a copy?'**

**'No, I can't fax because  
of where I live'**

**'Where do you live?'**

**'The 21<sup>st</sup> century'**





# A PARTNERSHIP BETWEEN SCHOOL AND FAMILY

“

We'd lose the ability for parents to choose an education for their children that is in line with the values they uphold.

INDEPENDENT SCHOOL PARENT



For nearly nine in ten Independent school parents (85%), the value of Independent schooling is that their child's school aligns with their own values and beliefs.



Nine in ten Independent school parents (93%) agree their school has had a positive impact on their family.



“

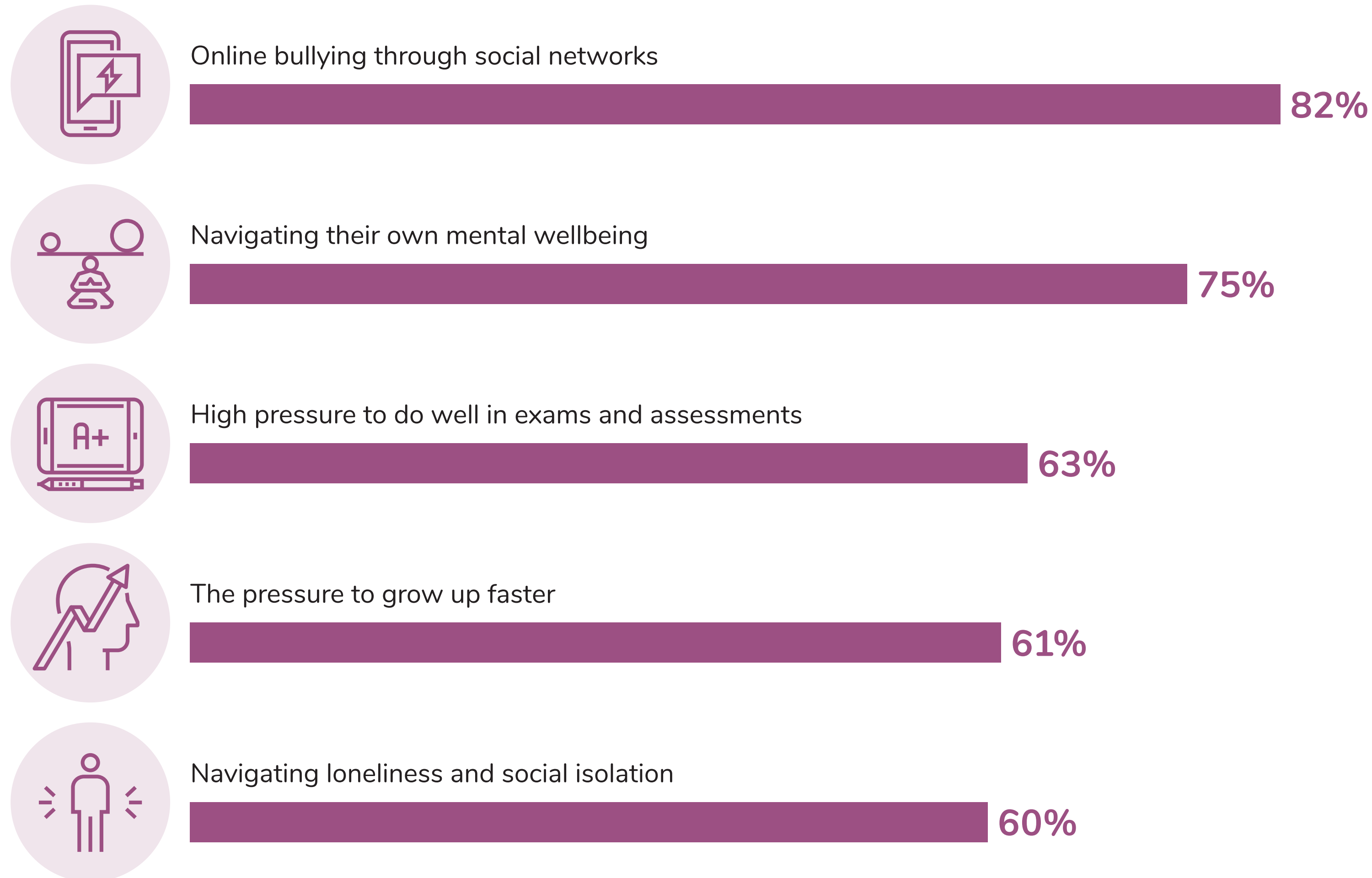
Schools play a critical role in sustaining our shared way of life and wellbeing. This important task is not just the responsibility of school education alone but requires a partnership with the home and wider community to shape the lives of young people.

**ALBERT CHENG & DARREN ISELIN**

*Australian Schools and the Common Good (pg. 4)*

# HOW CHALLENGING DO YOU PERCEIVE THE FOLLOWING TO BE FOR TODAY'S STUDENTS?

% of teachers from all sectors - extremely/very challenging

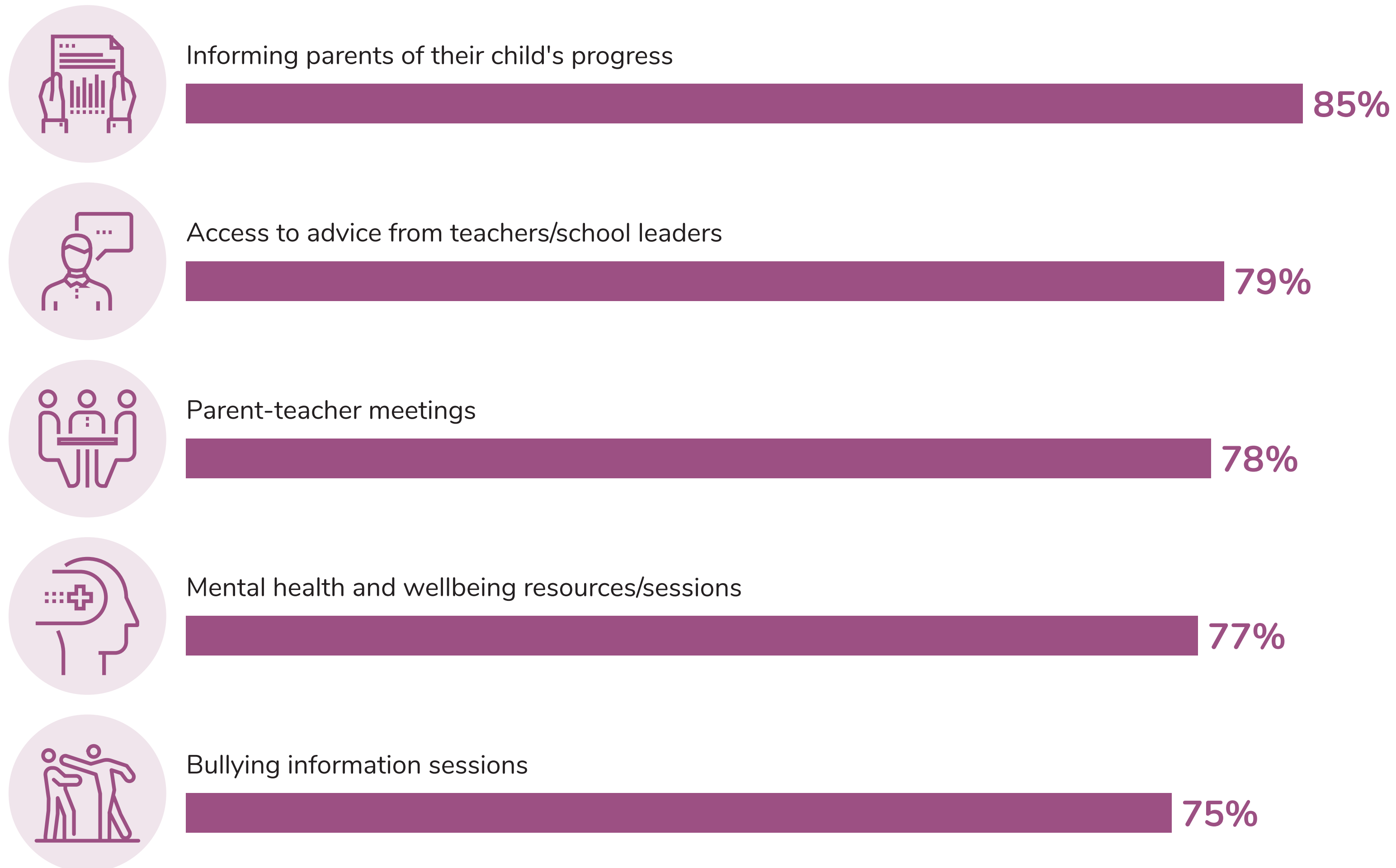


# 3 big fears of the global generation

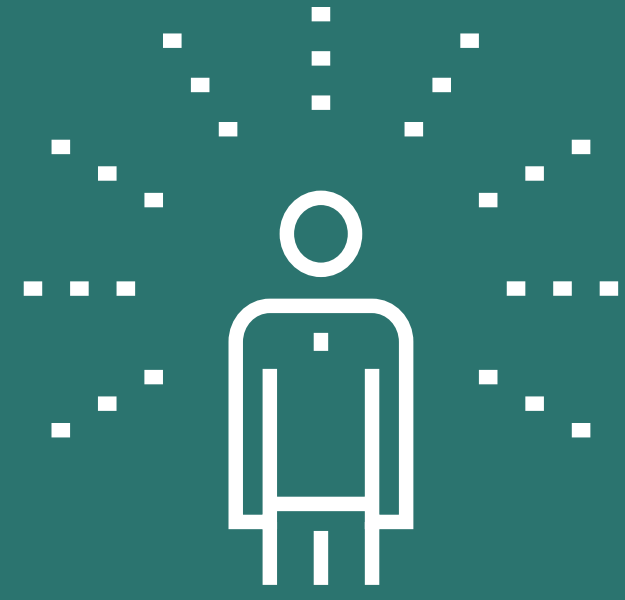


# HOW VALUABLE HAVE THE FOLLOWING EVENTS, PROGRAMS AND ACTIVITIES ORGANISED BY THE SCHOOL BEEN IN SUPPORTING YOU AS A PARENT?

Top 5 - extremely/very valuable







# THE HOLISTIC DEVELOPMENT OF STUDENTS

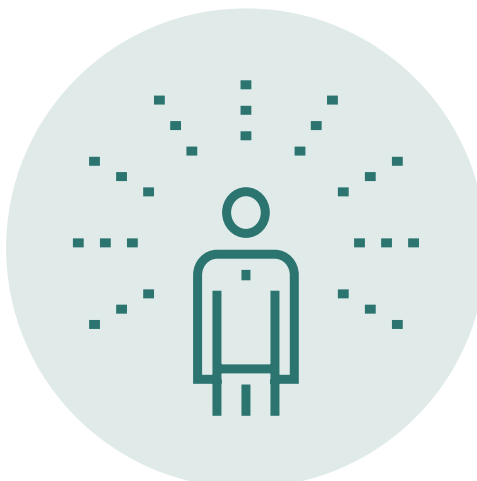
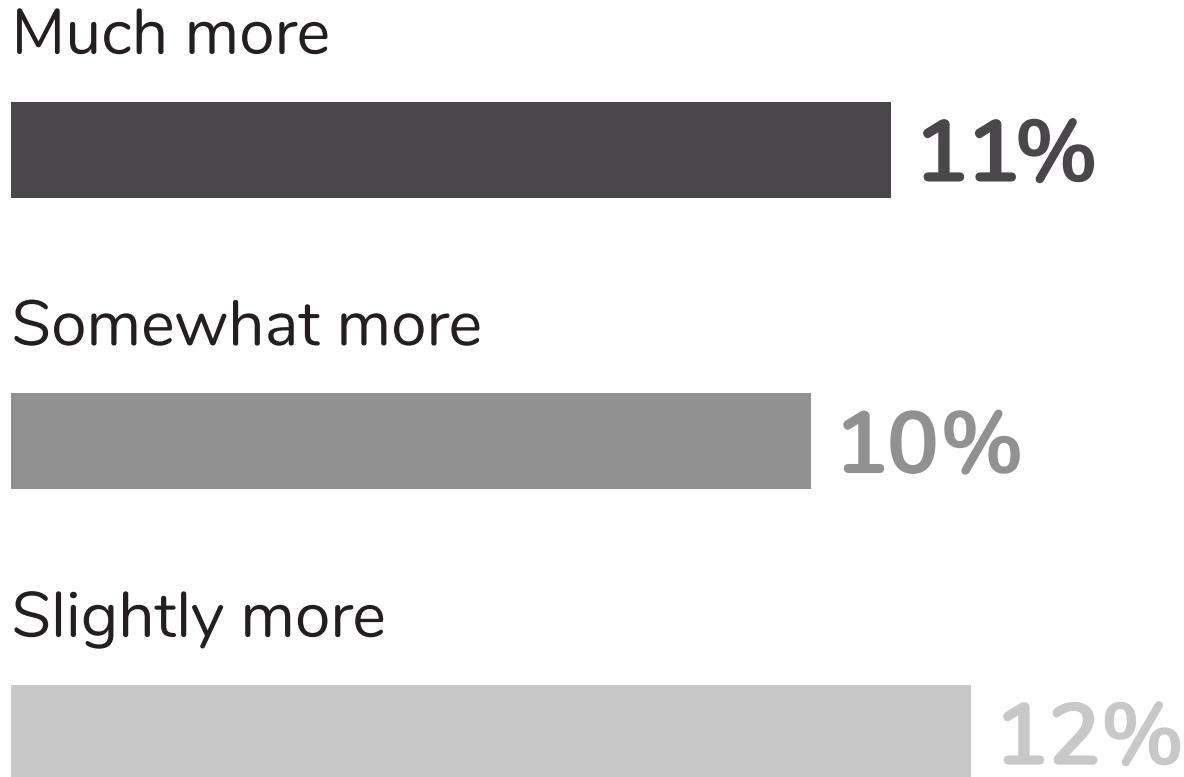


# DO YOU BELIEVE IT IS MORE IMPORTANT TO TEACH FOR THE ACADEMIC DEVELOPMENT OR THE HOLISTIC DEVELOPMENT OF THE STUDENT?

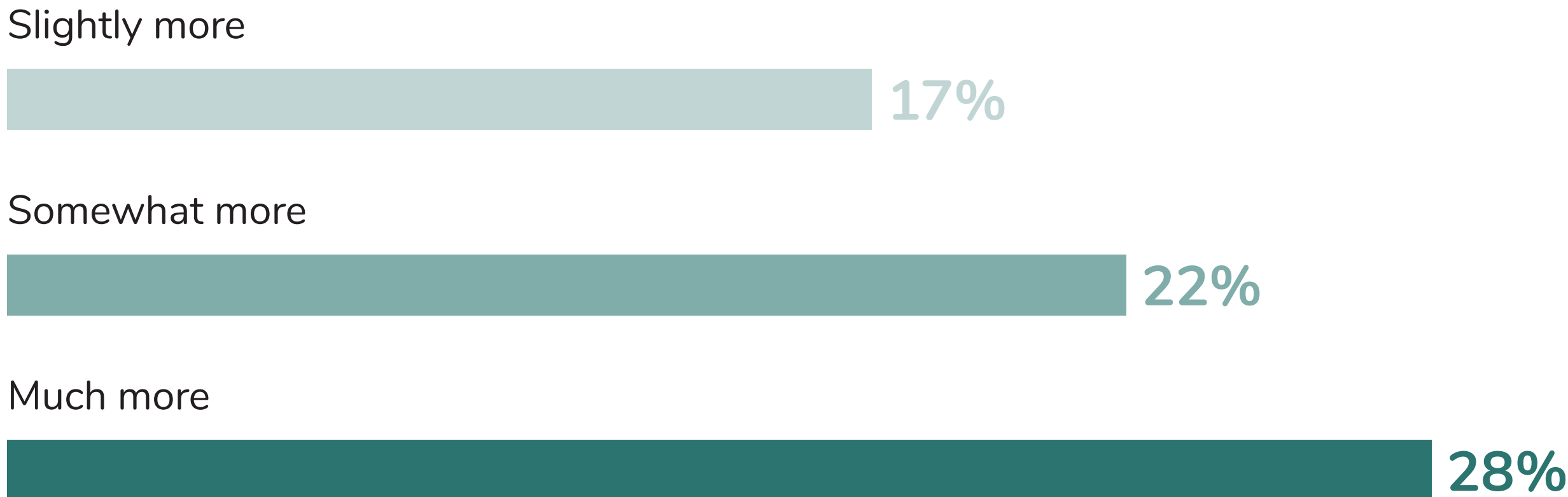
% of teachers from all sectors

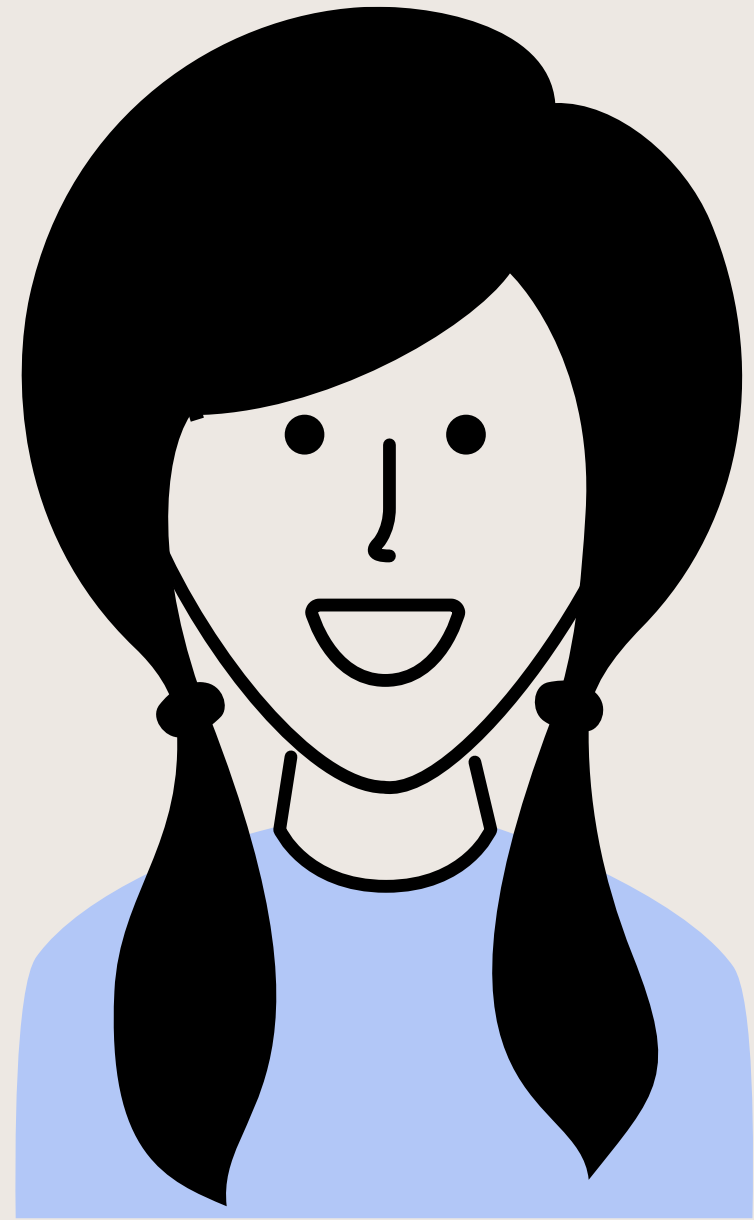


**Academic development**  
of the student

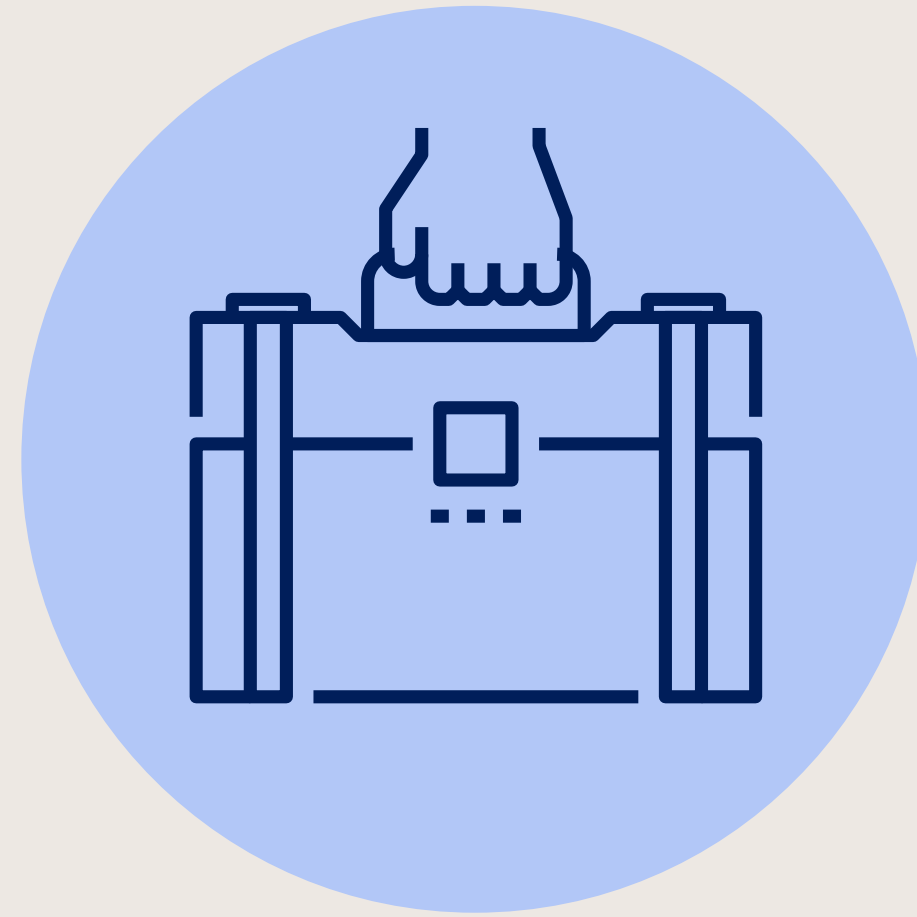


**Holistic development**  
of the student





**Gen Z**



**18 jobs**



**6 careers**

**In a lifetime**

“

**As we live longer, retire later, change jobs more frequently, and retrain across multiple careers, lifelong learning will move from an aspiration to essential.**

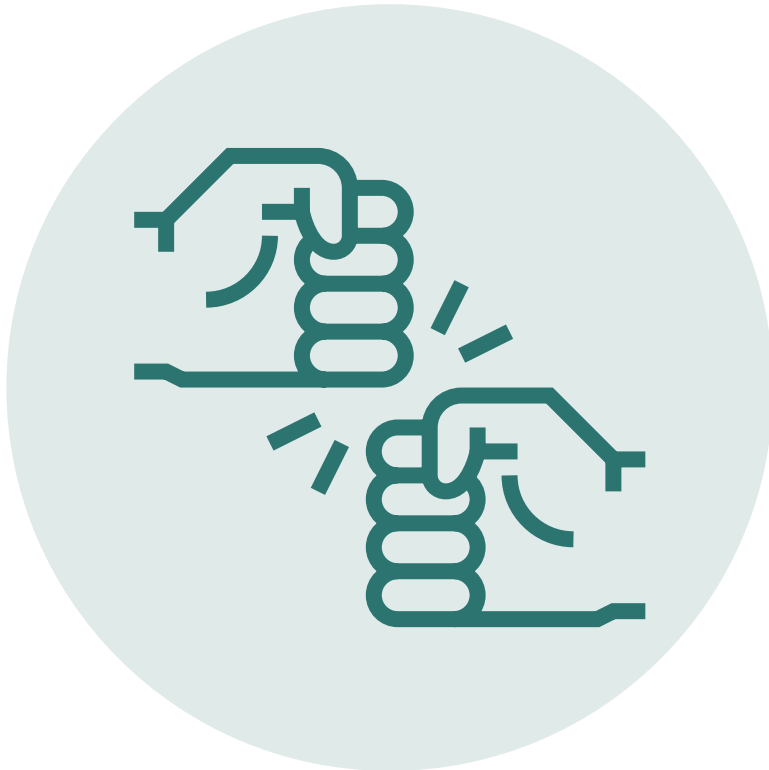
— McCrindle, *Seven Disruptors Impacting the Future of Education*, 2023



# PARENTS BELIEVE THEIR CHILD'S SCHOOL IS EXTREMELY/VERY INTENTIONAL IN DEVELOPING POSITIVE CHARACTERISTICS AND VALUES



**82%**  
Honesty and integrity



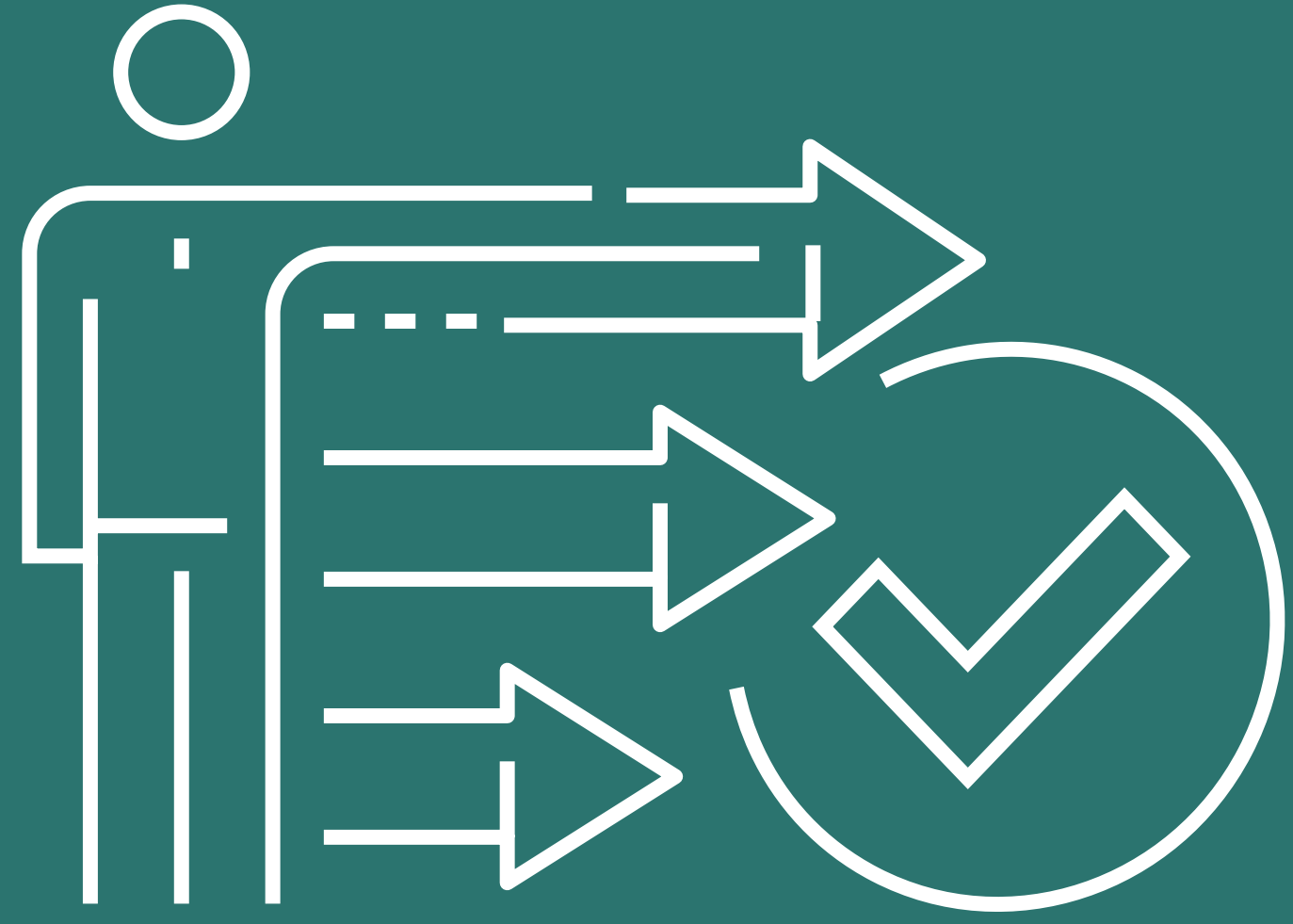
**80%**  
Respect



**82%**  
Responsibility



**79%**  
Kindness and compassion



Nearly two in three graduates of Independent schools (64%) feel very or somewhat prepared by their school for finding purpose, meaning and direction in life.

“

**This is the options generation, with unlimited pathways, but we do them no favours if we give them endless options, but no purpose.**

— McCrindle, *Seven Disruptors Impacting the Future of Education*, 2023

“

One of the most important measures of success is what our students do after they leave Huntingtower. I believe our graduates head into the community and contribute to the public good. They are good people with strong values and a desire to make a positive difference in the world.

**ANDREW HOUGHTON**

Principal of Huntingtower

# HOW EFFECTIVE DO YOU BELIEVE YOUR CHILD'S SCHOOL IS AT DEVELOPING THE FOLLOWING SKILLS IN THEIR STUDENTS?

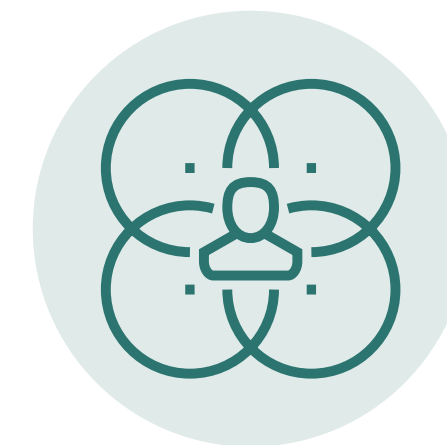
% of Independent school parents - extremely/very effective



**79%**

## Communication

The ability to exchange information by speaking, writing, or through other means



**72%**

## Self-management

Taking responsibility for one's own life, aspirations and well-being



**75%**

## Critical thinking

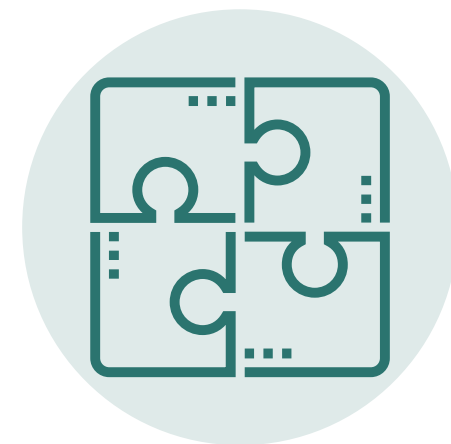
The ability to think objectively in forming one's judgment



**72%**

## Adaptability

The ability to adjust to new conditions and environments



**75%**

## Problem solving

The ability to find solutions, alternatives or possibilities



**71%**

## Lifelong learning

The ongoing, voluntary and self-motivated pursuit of knowledge



**72%**

## Creativity and innovation

The ability to use one's imagination to produce something new



**69%**

## Leadership

The ability to empower and serve others



# Change fatigue



Helping grandma  
with the controller

# DOES YOUR SCHOOL SUPPORT THE DEVELOPMENT OF STUDENT LEADERSHIP IN SCHOOL AND IN THE WIDER COMMUNITY THROUGH ANY OF THE FOLLOWING?

*% of Independent school parents*



“

I really believe, that when our students live out servant leadership, they are positioned well for a life of meaning. Servant leadership is about asking ourselves; how can we serve others? How can we support other communities around us?

**GABRIELLE SMITH**

Deputy Principal at Waverley College

# One final figure

# 1,166

The number of days until  
the 2026 Census

August 2026							
Week	Su	Mo	Tu	We	Th	Fr	Sa
31							1
32	2	3	4	5	6	7	8
33	9	10	11	12	13	14	15
34	16	17	18	19	20	21	22
35	23	24	25	26	27	28	29
36	30	31					

© 365



# Thank you

**Phone** 1800 873 637

**Email** [info@mccrindle.com](mailto:info@mccrindle.com)

**Phone** [mccrindle.com](http://mccrindle.com)

**Address** **Sydney office**  
Suite 105, 29 Solent Circuit  
Norwest, NSW 2153

**Perth office**  
Suite 8, 126 Broadway  
Crawley, WA 6009

 [mccrindlerearch](#)

 [mccrindle\\_](#)

 [mccrindlerearch](#)

 [mccrindle](#)