

Annual Report



2021-22

2021-22

CONTENTS

1 Who We Are 2 Chair's Report 4 Executive Officer's Report
6 Year in Review 10 Research 14 Acknowledgement

QUEENSLAND INDEPENDENT SCHOOLS PARENTS NETWORK

The Queensland Independent Schools Parents Network (QIS Parents Network) is wholly owned by Independent Schools Queensland and is governed by a Board of Directors.

The QIS Parents Network Executive Officer is supported by a Consultative Committee comprised of parents from small and large independent schools across Queensland.

The QIS Parents Network acknowledges and thanks the Queensland Government for its funding support and Independent Schools Queensland (ISQ) - the peak body representing the state's 230 independent schools - for its in-kind and Board secretariat support.

ANNUAL GENERAL MEETING

The 2022 Annual General Meeting will be held on 24 November in Brisbane.



Representing the families of more than 140,000 students from Prep to Year 12 enrolled in Queensland's 230 independent schools.

Working collaboratively
for the benefit of all children.

Sharing our resources with
families and educators everywhere.

Who we are

The Queensland Independent Schools Parents Network (QIS Parents Network) is the recognised representative body – and a strong voice – for the needs and interests of parents who choose an independent education for their children. We are consulted by governments and other peak education groups on policy matters that affect families.

The QIS Parents Network is also a passionate advocate for positive and respectful learning partnerships between schools, parents and children (what is known as 'parent engagement'). Our website is a rich well of research and quality resources to help teachers and schools power up their parent engagement.

Building our reach in 2021-22

In addition to continuing to share evidence-informed resources on parent engagement, education news and student wellbeing, QIS Parents Network has joined forces with Independent Schools Queensland (ISQ) to elevate and enhance parent and community engagement in independent schools through regular events and programs.

A key program in 2021 and 2022 has been *Engaging Parents in Inquiry Curriculum (EPIC)*, led by internationally recognised parent engagement experts Dr Linda Willis and Professor Beryl Exley of Griffith University. Six independent schools had their parent engagement practices analysed and nurtured by the researchers throughout 2021 as part of EPIC. Three of those schools have also continued in EPIC in 2022 in a 'scaled up' way involving more staff and school leadership teams.

See pages 10 to 13 for more detail on EPIC.

Chair's Report



I'm pleased to report that QIS Parents Network is now helping lead the way in Australia in terms of evidence-based best practice in parent engagement.

The Queensland Independent Schools Parents Network has been advocating for families who choose an independent education for their children since 2014, and that representation has continued strongly in 2021-22.

A key pillar of our advocacy work has been championing the powerful role parents can play in the education of their children.

I'm pleased to report that QIS Parents Network is now helping lead the way in Australia in terms of evidence-based best practice in parent engagement.

Our ongoing Engaging Parents in Inquiry Curriculum (EPIC) research project – a collaboration with Independent Schools Queensland (ISQ) and Griffith University – launched in early 2021. EPIC is delivering something that has been missing in the research literature until now – the 'how' to engage parents in the learning that occurs at school.

Through in-depth interviews with independent school leaders and teachers and important classroom-level work, EPIC is documenting how schools are bringing parents closer to their child's learning using inquiry curriculum approaches and digital technology.

The findings from the 65-page report summarising that first year of EPIC research, *Engaging parents and communities in children's learning and wellbeing EPIC 2021 Report* published in November 2021, significantly added to the existing body of research around parent engagement.

As EPIC researchers Dr Linda Willis and Professor Beryl Exley wrote in that report, their findings contain "rich detail to begin to fill a gap in the literature about what parent engagement looks like and how it may be achieved in practice".

EPIC is continuing in an expanded way in 2022 and seeks to investigate sustainable models of parent engagement by conducting 'scaled up' research in three independent schools. This involves expanding the study from teachers working singly to engage parents - to year levels of teachers working collectively. Nineteen educators are taking part in 2022.

In addition to receiving personalised, tailored advice and support from Dr Willis and Professor Exley, participating schools are contributing to an important, ongoing body of research about effective pedagogies and strategies for engaging parents in their child's learning and wellbeing.

Insights from this second year of EPIC research will be shared with all ISQ member schools later this year.

Acknowledgments

I would like to thank Dr Willis and Professor Exley from Griffith University for the professionalism and expertise they bring to our parent engagement work. It is always a delight to work with them. Their knowledge of parent engagement and the challenges and complexities of modern school life for both parents and teachers is second to none.

Thanks also to our six EPIC schools whose enthusiastic participation in EPIC will benefit teachers and families for many years.



I would also like to acknowledge EPIC Project Coordinator Amanda Watt for her behind-the-scenes work to ensure EPIC runs smoothly for our schools and for the research team. Amanda also writes and manages all the communication outputs from EPIC and QIS Parents Network, encompassing website stories, video projects and social media posts, and is a great champion of our work.

The valuable funding support provided by the Queensland Government and the generous in-kind support provided by ISQ are both vital to the continued success of QIS Parents Network and for this we are extremely grateful.

Thank you to all QIS Parents Network Board members who volunteer their time to fulfill important governance duties. A special welcome to our newest board member Glenn Denniston, who joined us on 4 March 2022.

Executive Officer Handover

Finally, I would like to thank outgoing Executive Officer Justine Cirocco for her two and a half years of service to QIS Parents Network. Justine has been a positive public face representing QIS Parents Network and has attended many stakeholder events to advocate on our behalf. She has collaborated with me and Amanda Watt and has also liaised with other members of the Board and members of ISQ in the course of her duties. Justine's time with us came to an end on 30 June 2022 and we wish her all the best for the future.

Above (L-R): QIS Parents Network Board Chair Shari Armistead (second from right) and Queensland Premier Annastacia Palaszczuk (centre) at a school and parent stakeholder lunch hosted by Education Minister Grace Grace MP (second from left) at Parliament House, May 2022.

Amanda Watt, who has worked at QIS Parents Network since 2019 as our Communications Officer, and more recently as EPIC Research Coordinator too, has been appointed to the role of Executive Officer, taking effect from 1 July 2022. The tremendous amount of work Amanda has already put in to QIS Parents Network means she is well suited to the role. I am confident parents of children attending independent schools in Queensland will be well represented under her tenure.

**Shari Armistead
Board Chair
Queensland Independent Schools Parents Network**

Executive Officer's Report



The past 12 months have been another period of growth for our audience. As detailed in this report, QIS Parents Network's key communication channels – website, Facebook page, and monthly electronic newsletter – have all grown.

There is no doubt that parenting in 2022 comes with unique challenges, but we are also in the midst of a significant new era – where the role of parents in the education of their children is being increasingly respected by governments, educators and policy makers.

As Board Chair Shari Armistead has outlined in her report, the Queensland independent school sector's EPIC research project, ably led by Dr Linda Willis and Professor Beryl Exley from Griffith University, is adding significantly to this good news movement. What a privilege it has been to read the EPIC reports and to know that QIS Parents Network is making a tangible difference in the lives of families and schools with this work.

Expanding our audience

QIS Parents Network has continued to provide its followers with timely updates on education and student wellbeing news and to be a reliable point of contact.

The past 12 months have been another period of growth for our audience. As detailed in this report, QIS Parents Network's key communication channels – website, Facebook page, and monthly electronic newsletter – have all grown (see page 8).

'What Parents Want'

A highlight of 2022 has been reading the insights from Independent Schools Queensland's latest [What Parents Want](#) survey. The survey, the fifth in a longitudinal series, examined factors including schools considered, decision-making timeframes and information sources.

Responding to how well they thought Queensland independent schools handled the pandemic, 86% of parents said they were either satisfied or very satisfied.

Nearly two in every three parents (65%), sending their child to an independent school for the first time, were influenced by the level of support offered by the school during COVID-19.

The survey insights provide a valuable opportunity for schools to inform the way they engage with current and prospective parents.

The findings clearly show parents place a great deal of importance on choosing the right school for their child. A significant part of meeting their expectations comes down to schools actively ensuring parents are engaged throughout their child's educational journey.



Acknowledgments

Thank you to QIS Parents Network Board Chair Shari Armistead who has been a great leader and supportive mentor to me over my tenure.

Thanks also to the entire board, Independent Schools Queensland CEO Chris Mountford, our Consultative Committee members past and present, and QIS Parents Network board secretary Annette Butterworth for their continued support and guidance of QIS Parents Network's significant mission: to inform and advocate for parents who choose an independent education for their children.

Thanks to QIS Parents Network Communications Officer Amanda Watt for her tireless information sharing work and for project coordinating the EPIC research on behalf of QIS Parents Network and ensuring that its findings are shared with all independent schools in Queensland. I wish Amanda all the best as the next Executive Officer.

I loved every minute of being a part of the QIS Parents Network team and wish everyone associated with it continued success.

Justine Cirocco
Executive Officer
Queensland Independent Schools Parents Network



Top: QIS Parents Network Executive Officer Justine Cirocco's final board meeting in June 2022 with Board Directors (L-R) Mark Newham, Board Chair Shari Armistead, Dr Lynne Doneley, Justine Cirocco, Glenn Denniston and ISQ Chief Executive Officer Christopher Mountford.

Bottom: QIS Parents Network Executive Officer Justine Cirocco attending the P&Cs Qld Conference 2021. Left to right P&Cs Qld Board President Matthew Rowan, Justine Cirocco and P&Cs Qld CEO Scott Wiseman.

2021-22 Year in Review



Advocacy for independent school families

QIS Parents Network continues to engage with the Queensland Minister for Education and the Queensland Education Department as well as statewide education bodies.

QIS Parents Network also contributed to taskforces, committees and reviews including:

- Outside Schools Hours Care ministerial working group
- Healthy Food in Queensland School Alliance (co-ordinated by the Queensland Association of School Tuckshops)
- Review of the Education (General Provisions) Act 2006
- World Teachers' Day stakeholders group
- ISQ Affiliated Reference Group

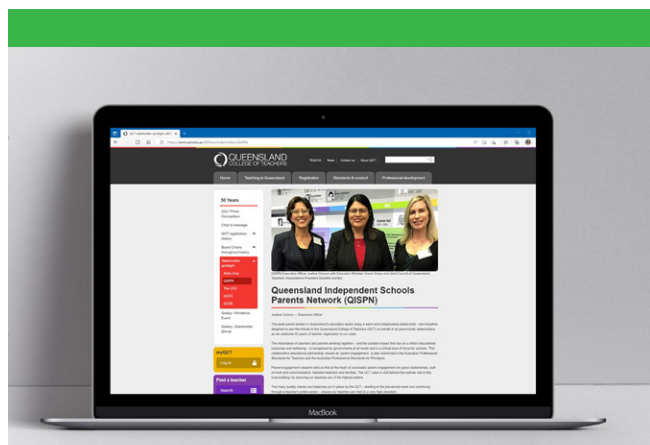


Top (L-R): Board Chair Shari Armistead, Principal Cannon Hill Anglican College Gary O'Brien, QIS Parents Network Executive Officer Justine Cirocco and ISQ Chief Executive Officer Christopher Mountford at the *What Parents Want* Survey launch.

Middle: Board Chair Shari Armistead, Education Minister Grace Grace MP, Board Directors Denielle Fowler and Mark Newham.

Bottom (L-R): Griffith University Professor Beryl Exley, EPIC Research Project Coordinator Amanda Watt, Yarranlea Primary School staff - Karen Argus, Rebecca Zouliou, Rebekah Woelz, and Griffith University's Dr Linda Willis.

Purposeful advocacy Meaningful parent engagement



Raising the profile of parents

QIS Parents Network is invited to speak to educators and submit articles about the importance of parent engagement in education and to provide commentary about school-family partnerships.

Top: Queensland College of Teachers enews article submitted by QIS Parents Network celebrating the 50th Anniversary of Teacher Registration in Queensland.

Bottom: Executive Officer Justine Cirocco addressing independent school teachers at ISQ's Research Showcase, November 2021.

Working collaboratively and contributing to the advancement of education



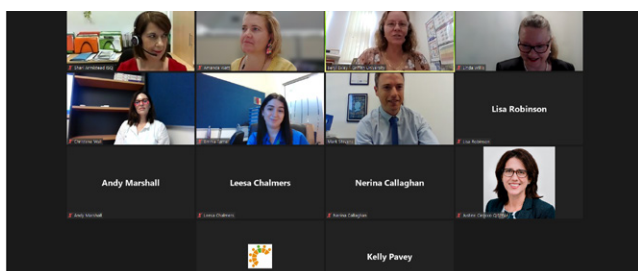
Top (L-R): Incoming QIS Parents Network Executive Officer Amanda Watt, ISQ Chief Executive Officer Christopher Mountford, QIS Parents Network board member Tammie Irons, Isolated Children's Parents' Association Queensland's President Louise Martin at the ICQA Queensland State Conference, Blackall, June 2022.

Bottom (L-R): QIS Parents Network Executive Officer Justine Cirocco with educators at the ICQA Federal Conference, Longreach, 2021.

2021-22 Year in Review

Representing a diverse sector

Regular meetings with our Consultative Committee - made up of parents from large and small independent schools around the state - informs important advocacy work and ensures views are representative of the diverse independent sector.



Professional Development for schools

In 2022 QIS Parents Network launched a parent engagement series of four workshops for independent school staff in Queensland.

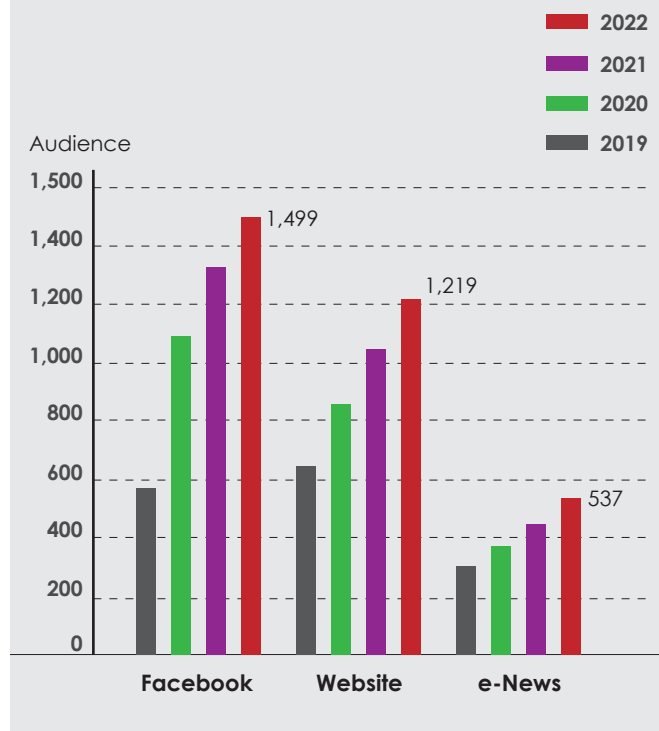
Two of these workshops occurred in the 2021-2022 year.

On March 21 ***Parent Engagement in Practice: The Early Years (years Prep-3)*** was held and the second workshop occurred on May 11, 2022 ***Parent Engagement in Practice: The Middle Years (years 4-7)***. These two 3-hour workshops were held online and facilitated by Dr Linda Willis and Professor Beryl Exley from Griffith University, who are also leading the EPIC research project. Findings from the EPIC 2021 research project were included in the workshop.

Trusted source of information

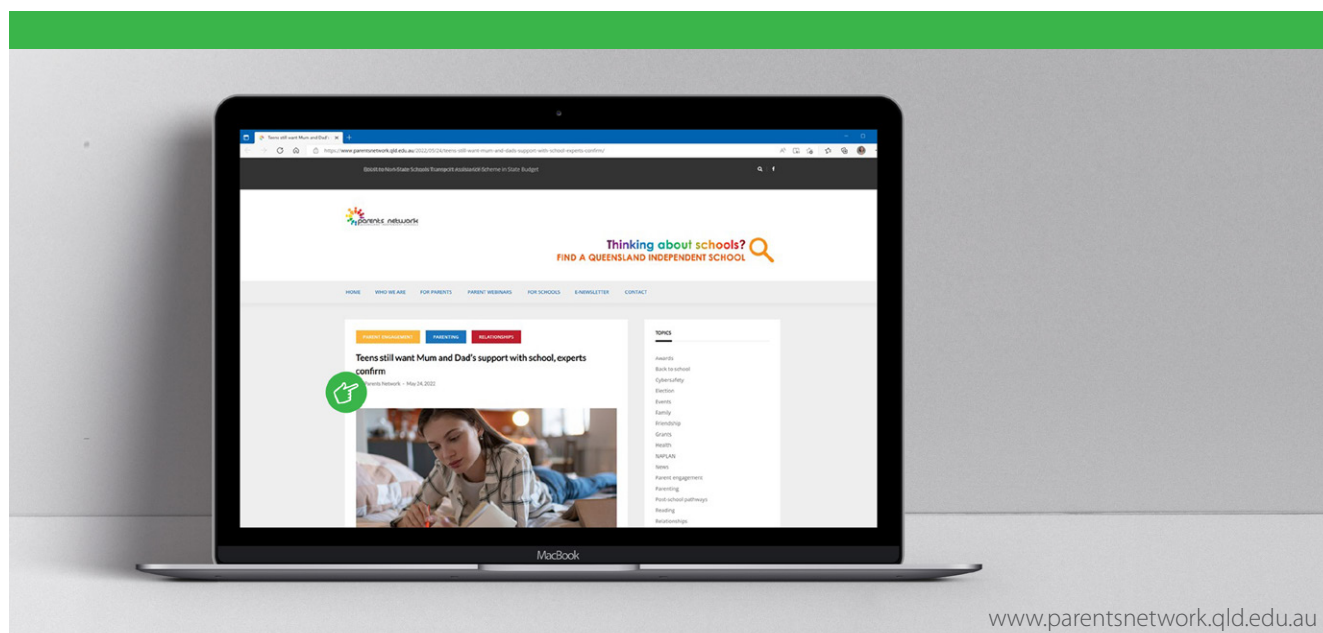
QIS Parents Network keeps its audience of families, educators and stakeholders updated with original, informative content which is posted on our website, shared via social media and via monthly e-newsletters to subscribers. Stories focus on education news and student and parent wellbeing topics.

Our online community of parents, educators and supporters has continued to grow.



Top left: Screenshot of attendees at the 21 March 2022 Parent Engagement webinar.

Purposeful advocacy Meaningful parent engagement



Creating shareable resources

Facebook posts about the Australian Curriculum Review, NAPLAN and free courses and tutorials on topics such as online safety, autism and post-school career pathways, were of great interest to our audience, based on engagement figures.

Schools and other parenting bodies shared our Facebook posts with their own parent communities.

New, original stories were added to QIS Parents Network's website every month, and these were also shared with independent school leaders through ISQ's electronic and social media communication channels and via our monthly e-newsletter, which is received by a mix of parents, stakeholders and educators.

The following are a selection of original stories:

www.parentsnetwork.qld.edu.au/2022/05/24/teens-still-want-mum-and-dads-support-with-school-experts-confirm/

www.parentsnetwork.qld.edu.au/2022/03/23/how-do-schools-engage-busy-parents-make-any-requests-small-offered-often-and-always-optional-experts-say/

www.parentsnetwork.qld.edu.au/2022/02/23/why-forming-a-good-relationship-with-your-childs-teacher-is-worth-your-time-and-how-to-go-about-it/

www.parentsnetwork.qld.edu.au/2022/05/17/updated-australian-curriculum-version-9-0-now-live/

www.parentsnetwork.qld.edu.au/2022/03/30/naplan-changes-on-their-way-from-2023/

www.parentsnetwork.qld.edu.au/2022/06/22/feedback-wanted-on-proposed-revisions-to-the-way-languages-german-indonesian-korean-modern-greek-spanish-are-taught/

www.parentsnetwork.qld.edu.au/2022/06/22/boost-to-non-state-schools-transport-assistance-scheme-in-state-budget/

www.parentsnetwork.qld.edu.au/2022/03/02/supporting-your-kids-through-adversity-experts-share-their-advice/

Research

Engaging Parents in Inquiry Curriculum (EPIC): A research project for ISQ member schools

A collaboration between QIS Parents Network, Independent Schools Queensland and Griffith University.

Led by Dr Linda Willis and Professor Beryl Exley

EPIC is beginning to fill a gap in the literature about what parent engagement looks like and how it may be achieved in practice. EPIC's evidence-based findings are shared with all independent schools in Queensland.

Parent engagement is by no means a new concept in education circles.

Research over the past 60 years, conducted here in Australia and overseas, has proven its value and its incredible potential for improving students' academic, social and emotional outcomes.

Parent engagement is a strong priority of governments, it is cemented in national and state education policies and teachers' professional standards, and it increasingly features in schools' strategic plans.

However, what has been missing for a long time has been the rich, practical, evidence-based examples of the 'how to' of parent engagement.

That is now changing thanks to a ground-breaking research project underway in the Queensland independent school sector.

The research project – Engaging Parents in Inquiry Curriculum – (called "EPIC" for short) – began in early 2021 and is continuing in 2022.

EPIC is being led by Australia's leading parent engagement experts, Dr Linda Willis and Professor Beryl Exley of Griffith University, who are collaborating closely with participating Queensland independent schools in different contexts.

Dr Willis and Prof Exley work side-by-side with teachers and school leaders from the early years to senior secondary levels as they explore new ways to engage parents or refine existing parent engagement strategies.

Early findings

The independent sector's EPIC project is only 18 months old but it is producing some exciting findings that are not only demystifying the practice of effective parent engagement, but also delivering for our independent school leaders, teachers and parents a suite of resources and guiding principles for how they can work better together for the benefit of all students.

Many of the teachers taking part in EPIC say that it has only involved small tweaks to their current approach to curriculum and pedagogy and parents are appreciating the increased communication and insights into their child's school learning.

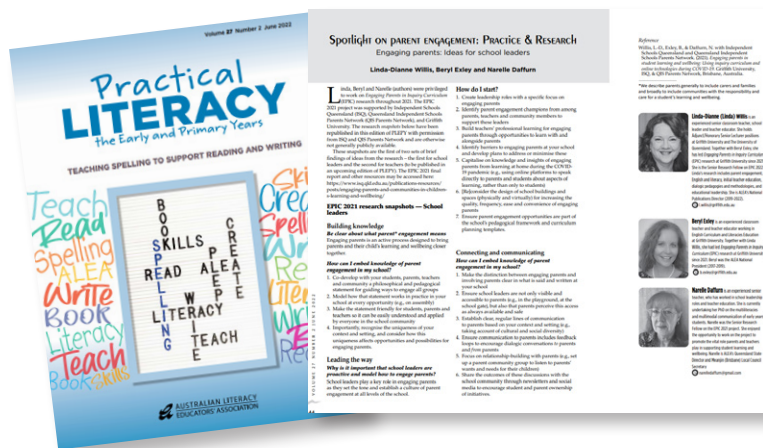
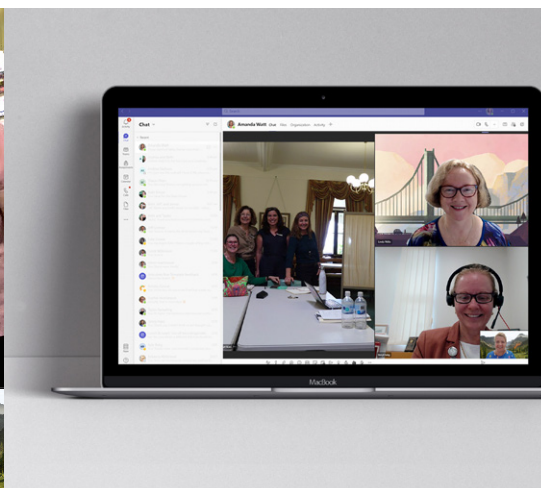
EPIC 2022 is continuing in a scaled-up way – involving more teachers and school leaders.

A new suite of resources for all member schools will be delivered towards the end of this year. Some of the evidence-based findings to emerge from EPIC so far include:

- Parent engagement activities should be tailored to a school's unique context and community: what is effective for one school may not be for another.
- Schools need to adopt a welcoming approach to parents that begins at the school gate.
- Invitations to parents to value-add to their child's learning in school should be "short in duration, sharp in focus, offered regularly, always optional, personal to them and have a clear purpose".
- Parent engagement strategies in a school have a much greater chance of long-term success if they are modelled and encouraged by the school's leadership team.



Costin | Yarranlea Primary School



Clockwise from left: The Yarranlea EPIC team with Dr Linda Willis (far right) and Professor Beryl Exley (second from right) from Griffith University and EPIC Project Coordinator Amanda Watt (inset).

Fairholme College Year 7 EPIC team meeting with Dr Linda Willis and Professor Beryl Exley from Griffith University.

Australian Literacy Educators' Association journal article spotlighting the EPIC project in the June 2022 edition, submitted by Dr Linda Willis, Professor Beryl Exley and Narelle Daffurn from Griffith University.

Samford Valley Steiner School EPIC team workshop, April 2022.

EPIC lead researcher Dr Linda Willis:

"If I had to talk about parent engagement simply it's about having the child in the middle and the school and the parent working as partners to improve a child's learning and wellbeing.

"Often it's a matter of teachers just asking one question of themselves during every curriculum planning session and that is 'how can I bring what I'm teaching a child and what

the parent knows about what I'm teaching their child closer together?'

"When teachers do that, it's potentially a game-changer"

The method of communication parents respond to best is another focus of the EPIC research.

"While some parents might value email as a way of getting information from their child's teacher about what is being taught that

day or week, others will respond better to a video blog that they can watch at night or perhaps a virtual space where they can exchange ideas at a time that suits them."

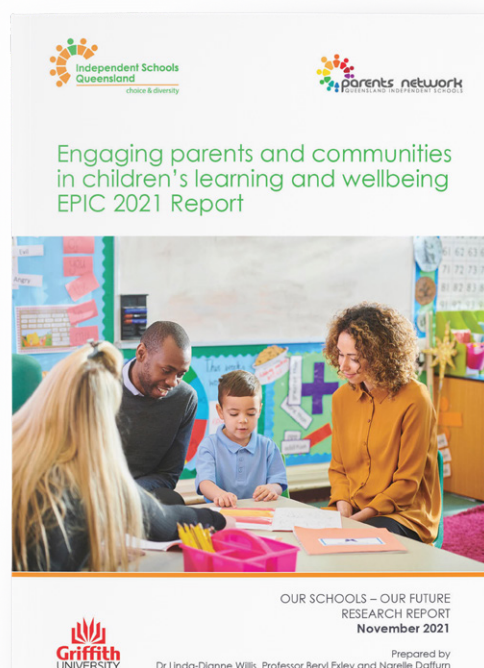
School leadership also plays a key role in effective parent engagement.

"School leaders set the tone and establish a culture of parent engagement at all levels of the school."

Resources shared across all independent schools in Queensland

The 2021 EPIC research findings were converted into shareable resources for all Queensland independent schools to start using straight away, including a detailed 65-page report.

[Read the full report](#)



EPIC Research Snapshots

The 2021 report findings were distilled into easy-to-read snapshots for school leaders and teachers. The snapshots provide rich examples of what parent engagement looks like and how it may be achieved in practice.

School Leaders Snapshot

Engaging Parents

Ideas for School Leaders

EPIC Research Snapshots

Building Knowledge

Be clear about what parents' engagement means

Engaging parents is an active process designed to bring parents and their child's learning and wellbeing closer together.

How can we embed knowledge of parent engagement in my school?

- Co-develop with your students, parents, teachers and community a philosophical and pedagogical statement for guiding ways to engage all groups
- Model how that statement works in practice in your school at every opportunity, e.g. on assembly
- Make the statement friendly for students, parents and teachers so it can be easily understood and applied by everyone in the school community
- Importantly, recognise the uniqueness of your context and setting, and consider how this uniqueness affects opportunities and possibilities for engaging parents.

Leading the Way

Why is it important that school leaders are proactive and model how to engage parents?

School leaders have a key role in engaging parents as they set the tone and establish a culture of parent engagement at all levels of the school.

How do I start?

- Create leadership roles with a specific focus on engaging parents
- Identify parent engagement champions from among parents, teachers and community members to support their leaders
- Build teachers' professional learning for engaging parents through opportunities to learn with and alongside parents
- Identify barriers to engaging parents at your school and develop plans to address or minimise these.
- Capitalize on knowledge and insights of engaging parents from learning at home during the COVID-19 pandemic (e.g., using online platforms to speak directly to parents and students about aspects of learning, rather than only to students)
- Reconsider the design of school buildings and spaces (physically and virtually) for increasing the equality, frequency, ease and convenience of engaging parents.
- Ensure parent engagement opportunities are part of the school's pedagogical framework and curriculum planning.

Connecting and Communicating

How can we embed knowledge of parent engagement in my school?

- Make the distinction between engaging parents and involving parents clear in what is said and written at your school
- Ensure school leaders are not only visible and accessible to parents (e.g., in the playground, at the school gate), but also that parents perceive this access as always available and safe
- Establish clear, regular lines of communication to parents based on your context and setting, e.g., taking account of cultural and social diversity
- Ensure communication to parents includes feedback loops to encourage dialogue, conversations to parents and from parents
- Focus on relationship-building with parents, e.g., set up a parent community group to listen to parents' views and needs for their children
- Show the outcomes of these discussions with the school community through newsletters and social media to encourage student and parent ownership of initiatives

These initial snapshots of ideas for schools come from the independent, engaging parents in student learning and wellbeing using inquiry curriculum and online technologies during COVID-19 (EPIC, 2021) conducted by Linda-Dianne Willis, Beryl Eley and Narelle Duffum from Griffith University in collaboration with ISQ and QIS Parents Network.

"We describe parents generally to include carers and families and broadly to include communities with the responsibility and care for a student's learning and wellbeing."

Teachers Snapshot

Engaging Parents

Ideas for Teachers

EPIC Research Snapshots

Building Knowledge

What is parent engagement?

Engaging parents is an active process designed to bring parents and their child's learning and wellbeing closer together.

What can I do to encourage parent engagement?

- Articulate clearly and early to parents what engaging in their child's learning and wellbeing means. Use Engaging Parents: What we know snapshot for more information
- Show from research the benefits of parent engagement for children's school and life success. Use Engaging Parents: What we know snapshot for more information
- Establish regular times and spaces to dialogue cooperatively with colleagues about engaging parents in the curriculum
- Network with parents to find out more about them, what they know and can do, and use this knowledge as inspiration for inquiry projects
- Lead by example, sharing your personal stories so parents come to appreciate the power of personal connection in their child's learning
- Build knowledge about curriculum inquiry projects and their associated pedagogies so there is a genuine opportunity for student agency and parent engagement.

Connecting and Communicating

Is there an ideal way to connect with parents?

Consider ways to engage parents that are not in isolation, sharp in focus, offered regularly, always optional, and personal to them and their child's learning.

What are some suggestions?

- Communicate with parents and families in ways they use and value, e.g., a blog created by students for parents
- Let parents know what their child is learning at the beginning of each week and close the loop by letting them know at the end of the week about their child's learning successes and next steps
- Create virtual spaces for engaging parents in classroom topics and phases of inquiry curriculum at times that suit them
- Harness the power of student agency for engaging parents, e.g., have students create a video about their learning, and email it to parents
- Respond quickly and directly to requests from parents for clarity and/or explanation about aspects of their child's learning and wellbeing.

These initial snapshots of ideas for schools come from the independent, engaging parents in student learning and wellbeing using inquiry curriculum and online technologies during COVID-19 (EPIC, 2021) conducted by Linda-Dianne Willis, Beryl Eley and Narelle Duffum from Griffith University in collaboration with ISQ and QIS Parents Network.

"We describe parents generally to include carers and families and broadly to include communities with the responsibility and care for a student's learning and wellbeing."

What We Know Snapshot

Engaging Parents

What We Know

EPIC Research Snapshots

Decades of research have consistently shown the value and importance of engaging parents in student learning and wellbeing.

- Recognised benefits for students**
 - Enhanced wellbeing and higher academic outcomes
 - Increased confidence, motivation and engagement in learning
 - More positive attitudes about school and improved behaviour
 - Improved school attendance, continued enrolment, and higher rates of graduation
 - Increased likelihood of participation in higher education
- Momentum for parent engagement continues to grow**
 - Governments – nationally and internationally – recognise the imperative of engaging parents
 - Parent engagement is a focus in three Australian Professional Standards for Teachers
- Engagement and involvement are different**
 - Parents keep time at the sports carnival or fundraising for the life are worthwhile school involvement activities as they may prove the first step toward engagement, but engaging parents is more effective
 - Parent engagement is an active process designed to bring parents and their child's learning and wellbeing closer together
- Positive, respectful relationships are crucial**
 - Effective parent engagement is possible when schools and families work in partnership and respect each other's unique contributions
 - A good relationship between school and home also means that when challenging situations arise – around a child's learning or wellbeing – conversation, and the outcomes for all involved, are more likely to be productive
- Parents appreciate personal, two-way approaches**
 - Parent engagement is enhanced when schools and teachers use any direct, personal forms of contact and communication which offer parents ways of staying connected
 - Some approaches may not genuinely engage parents in their child's learning, so their effectiveness should be regularly reviewed and changed or adjusted accordingly
- Keep it simple**
 - Engaging parents in their child's learning and wellbeing does not need to be overwhelming. With every opportunity, ask:
 - How can I bring parents closer to what their child is learning in the classroom/school?
 - How might parents contribute in easy, effective ways?

These initial snapshots of ideas for schools come from the research project, Engaging parents in student learning and wellbeing using inquiry curriculum and online technologies during COVID-19 (EPIC, 2021) conducted by Linda-Dianne Willis, Beryl Eley and Narelle Duffum from Griffith University in collaboration with ISQ and QIS Parents Network.

"We describe parents generally to include carers and families and broadly to include communities with the responsibility and care for a student's learning and wellbeing."

RESEARCH CONTINUED



EPIC Research School Profiles

EPIC Breaks New Ground

St Peters Lutheran College

Samford Valley Steiner School

EPIC Research Report Video

The *Engaging Parents in Inquiry Curriculum (EPIC)* research report was born out of the need for rich examples of effective parent engagement strategies and approaches at a classroom level.

Teachers and families share their EPIC journey in this video which is available on the QIS Parents Network website.



An eye to the future

We look forward to delivering a new suite of resources for all member schools towards the end of the 2022 year. Planning for 2023 is also well underway with EPIC set to continue, involving more teachers and school leaders.



CONTACT DETAILS

www.parentsnetwork.qld.edu.au

Connect with us on Facebook

facebook.com/QISParentsNetwork

Sign up to our monthly emails

parentsnetwork.qld.edu.au/get-involved/

Send us an email

info@parentsnetwork.qld.edu.au

Write to us

Queensland Independent Schools Parents Network
c/- Independent Schools Queensland,
PO Box 957, Spring Hill Q 4004
P 07 3228 1560

Thank you

We receive significant support from Independent Schools Queensland – the peak body that represents and advocates for the interests of Queensland's 230 independent schools.

Thank you to the Queensland Government for its ongoing funding support.