

2025

Professional

Learning & Services

Guide



Independent Schools  
Queensland

choice & diversity



MAY 2025



Independent Schools Queensland (ISQ) aligns itself with organisations that are also determined to make a difference. ISQ’s Alliance Partnerships are built on trust, commitment and responsibility.

CONTENTS

Professional learning with ISQ4

How to learn...it's your choice5

ISQ programs6

2025 calendar8

e-Learning @ ISQ12

Spotlight on regional schools13

Member-focused service offering14

2025

Independent Schools Queensland is the specialist professional learning provider for the independent schooling sector.

Welcome

Independent Schools Queensland is your dedicated partner in education, presenting a variety of enriching professional learning experiences and events for 2025.

Our program, led by industry experts, offers diverse opportunities for learning and growth, enhancing your team's skills and supporting their career ambitions.

The 2025 program includes three flexible learning modes: in-person for direct interaction, live webinars for remote access, and self-paced online modules. Additionally, we offer hybrid options that combine face-to-face engagement with live webinars for a balanced learning experience.

I encourage all school leaders to explore and share the 2025 ISQ Professional Learning & Services Guide with their teams. You can find out more about these events and register on ISQ's professional learning hub, Connect&Learn.

CHRISTOPHER MOUNTFORD  
CHIEF EXECUTIVE OFFICER

# Professional learning with ISQ

**ISQ is committed to delivering high-quality professional learning that empowers educators and school leaders and leads to improved student outcomes. For more than 50 years, ISQ has been at the forefront of independent schooling and education innovation, providing unmatched learning experiences in partnership with industry leaders.**

Every year thousands of independent school leaders and staff choose ISQ as their trusted learning provider and work towards ensuring member schools remain at the forefront of education innovation, leadership development and continuous whole school improvement.

ISQ is defined by its members, not by distance, and will continue to prioritise member's access to quality professional learning. In 2025, members in all parts of the state can connect with peers and respected experts via ISQ's catalogue of in-person events, webinars and self-paced e-learning modules.

ISQ has more than 260 high-quality programs, events, webinars and modules designed to:

- enhance the knowledge, skills, strategies and practices of schools and leaders
- build board, principal and teaching capability and capacity
- create and nurture professional communities of like-minded education practitioners
- improve student outcomes at every achievement level.

More professional learning opportunities will be added throughout the year.

**ISQ is your specialist learning provider, delivering credible, research-based learning with outstanding schoolwide outcomes.**

## Professional development areas

### CURRICULUM, TEACHING & LEARNING

Independent school educators are driven to initiate change, workforce innovation, shape effective teaching and learning teams, and build professional learning communities for the benefit of the next generation.

**Topics:** Coaching & Mentoring, Curriculum & Assessment, Teaching & Learning, Teacher Growth & Development.

### SPECIALIST AREAS

Independent schools are devoted to providing a quality education for all students. Improving an educator's experience, knowledge, or skill in a particular subject area can have a positive impact on learning.

**Topics:** Aboriginal and Torres Strait Islander Education, Inclusive Education, International Education, Kindergarten, Wellbeing, VET.

### LEADERSHIP & ADMINISTRATION

Effective school leaders and business administrators drive organisational culture and efficiency, lead by example and encourage performance by bringing out the best in their people.

**Topics:** Business Management, Employee Relations, Governance, ICT, Leadership, School Improvement, Media & Communications.

## How to learn...it's your choice

**ISQ offers a range of event styles, so members can find the type of event that suits their learning style.**

### PROGRAMS

ISQ programs are targeted to member needs, research-based and involve commitment across one to two years. We encourage you to visit the Programs page on the ISQ Member Hub and explore the 2025 programs on offer. Here you will find comprehensive information about individual programs including program content, intended outcomes and timelines for events and deliverables. View the 2025 programs [here](#).

### WORKSHOPS

Workshops are events where participants complete work and activities that will be of benefit to their current role. Workshops often run over one or two days and allow participants to engage in intensive learning, discussion and/or practical application.

### NETWORKING OPPORTUNITIES

Many ISQ events include allocated time and structure in the program for participants to expand their networks and share experiences in a more social context. Networking provides the opportunity to meet peers within the independent schooling sector and gain insights from other education professionals.

### MASTERCLASSES

ISQ masterclasses include a deep dive into the subject matter, featuring the expertise of an academic or industry expert. Members will be able to develop a deep understanding of the topic being presented.

### SHOWCASES

ISQ showcases feature presentations from a selection of leading educational thought leaders. They provide an opportunity to hear from educators from other member schools as they showcase improvements they have made in a formal presentation cycle.



#### IN-PERSON

ISQ will offer more than 125 in-person and hybrid events in 2025. Members can maximise their learning experience at ISQ's purpose-built training room in South Brisbane. ISQ also offers regional professional learning opportunities to members outside of South-East Queensland.



#### ONLINE - LIVE WEBINARS

ISQ continues to expand the catalogue of live webinars, using video conferencing tools to meet the diverse needs of our members. In 2025, ISQ will host more than 85 webinars in 2025.



#### E-LEARNING

ISQ delivers over 60 courses and individual modules online. This self-paced mode of learning sustains continuous improvement among all member schools, facilitating greater access to high-quality professional growth and development, without the need for travel.

## Let's get started Your step-by-step guide

### STEP 1: Review the Guide

Take the opportunity to highlight events that are of interest.

### STEP 2: Click the link

When viewing the guide on an electronic device, simply click the link to go to Connect&Learn or to go directly to the event of interest.

### STEP 3: Register or Log In to ISQ Connect&Learn

New users need to create a login. A **Quick Reference Guide** has been developed to help you navigate your way through ISQ Connect&Learn. Some events may have a cost associated – schools will be charged for paid events upon registration. Where applicable, the payment options available are displayed on Connect&Learn.

### STEP 4: Register for an event

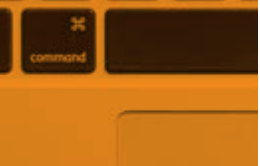
'Sign in' (top right) to the registration portal with your Member Hub login and password, then select the relevant pass to complete the registration process. If you do not have Member Hub access, go to <https://connectandlearn.isq.qld.edu.au/> to register. Registration FAQ's via this link – **Member Hub - Events - Frequently Asked Questions.pdf**.

### STEP 5: Keep up-to-date

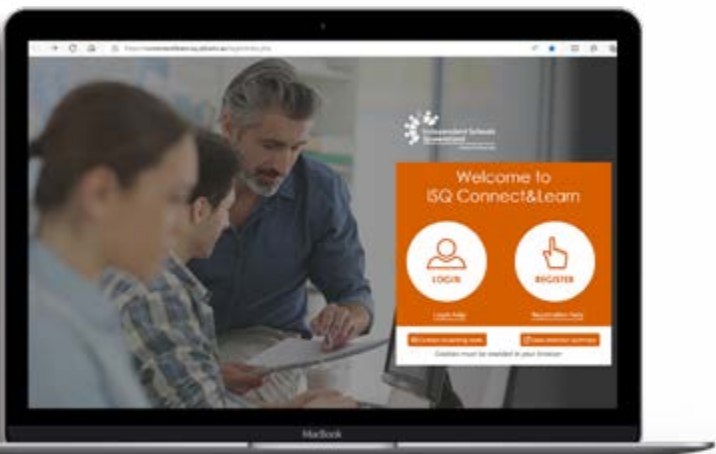
School leaders are encouraged to access the live Event Calendar in ISQ Connect&Learn for up-to-date information. You can review your preferences and update your details in Connect&Learn.

**Update your preferences here**





# ISQ programs



connectandlearn.isq.qld.edu.au

**ISQ Programs offer a comprehensive range of professional development opportunities for school staff. Participants are challenged to take part in a range of activities that are designed to foster growth and development.**

## Which program will you choose?

### Aspiring Principals Program

The growing complexity of the principal role, upcoming retirements, and a shortage of candidates have created a need for more high-quality aspiring principals. The Aspiring Principals program involves tailored capacity building based on your specific needs. Its purpose is to thoroughly prepare you for your first principal position. This is a significant investment in your personal growth to position you as a high-quality candidate for future principal positions. | [VIEW NOW](#)

### Beginning Teacher Support Program

The Beginning Teacher Program supports graduate and proficient teachers in their early years of teaching within the independent school sector. It offers expert advice on effective teaching strategies and opportunities for networking and sharing experiences throughout the year. The program includes a series of workshops designed to equip beginning teachers with practical strategies and foster connections across the sector | [VIEW NOW](#)

### Cognitive Science Implementation Program **NEW**

According to the Australian Education Research Organisation (AERO), aligning teaching practices with how students learn is crucial for improving education outcomes. Evidence from cognitive science and educational psychology supports this. However, effective implementation processes and strategies are vital for success. Grounded in implementation and evaluation science, ISQ's Cognitive Science Implementation Program uses a train-the-trainer approach to support schools in the first year of applying cognitive science principles, focusing on explicit instruction and formative assessment. | [VIEW NOW](#)

### Executive Leadership Suite

The Executive Leadership Suite is tailored for Senior Leaders of independent schools in Queensland. It aims to enhance leadership skills and strategic thinking while fostering connections among principals. Through webinars, roundtables, and networking events, participants will build expertise in key priority areas. The program includes masterclasses, discussions, and networking opportunities delivered in various formats by guest speakers and subject matter experts | [VIEW NOW](#)

Log in to  
Connect&Learn

### Highly Accomplished and Lead Teacher Certification (HALT)

Since 2017, Independent Schools Queensland (ISQ) has certified 211 Highly Accomplished and Lead Teachers (HALTs) in the independent school sector. Overseen by the Australian Institute for Teaching and School Leadership (AITSL), this certification recognises outstanding teachers for their expertise and impact. Applicants undergo a rigorous evaluation process, including evidence gathering, classroom observations, and peer and student reviews, to demonstrate their teaching practices and effectiveness | [VIEW NOW](#)

### Leadership Essentials Program **NEW**

The Leadership Essentials Program empowers new and aspiring leaders with transformative skills and innovative practices to drive excellence, exclusivity, and resilience in schools and communities. Independent Schools Queensland, in partnership with Thriving Minds Global, offers this program for both teaching and non-teaching staff ready to advance their careers and build foundational leadership skills. The program includes a range of activities designed to prepare participants for leadership roles. | [VIEW NOW](#)

### Leading Inclusive Education Program **NEW**

Unlock your potential with the Leading Inclusive Education Program! This program equips you with the knowledge and skills to champion inclusion in your school. Through workshops, collaborative networks, and tailored coaching, you'll develop practical strategies to foster inclusion and ensure all students thrive. Participants will apply their understanding of their unique school context alongside insights from professional development sessions. Using an action-planning approach, you'll set strategic goals to drive meaningful and lasting changes in inclusive education. | [VIEW NOW](#)

### Mastering Parent Engagement **PLUS NEW**

Are you ready to enhance your school's parent engagement initiatives and collaborate with like-minded educators? Mastering Parent Engagement Plus is a new, year-long, invitation-only program designed to support school leadership teams in driving parent engagement. Participants must have completed ISQ's 2024 Mastering Parent Engagement Program or the previous Engaging Parents in Curriculum (EPIC) Research Project to be eligible. This program aims to make a significant impact in the growing field of parent engagement. | [VIEW NOW](#)

### Mastering Parent Engagement Program

Parent engagement is a key lever for improving school performance and wellbeing. This year-long, scaffolded program will help you understand its importance in high-performing schools, assess your current approach, and learn from experts and peers. This evidence-based program draws on national and international research to demystify parent engagement. You'll assess your school's practices and make impactful tweaks to harness the power of parents for better academic and wellbeing outcomes. | [VIEW NOW](#)

### Mathematics Program

Numeracy is crucial for students' success and societal engagement (ACARA). With the introduction of Version 9 of the Australian Curriculum: Mathematics, it's timely for schools to review both content and pedagogy. ISQ's Mathematics Program supports school improvement by enhancing student outcomes in Mathematics. This blended professional development program covers the science of learning and effective teaching principles, including Explicit Instruction, Retrieval/Spaced/Interleaved Practice, and Formative Assessment. Schools receive tailored support, trial new methods, and showcase progress, ensuring approaches align with their specific context. | [VIEW NOW](#)

### Middle Leaders Coaching Program **NEW**

Middle Leaders support colleagues in teaching and learning, often stepping into leadership roles without formal training. They must demonstrate effective personal, social, and interpersonal skills with diverse stakeholders to lead change, meet school priorities, and improve outcomes. This program is designed for middle leaders, heads of curriculum or sub-schools, and highly-accomplished teachers who have some leadership experience and seek to enhance their coaching skills. | [VIEW NOW](#)

### Multi-School Organisation Project **NEW**

Teacher workload is a major issue, and planning is a significant component. Leveraging from the Grattan Institute's report, Spreading Success, ISQ's Multi-School Organisation Project aims to develop groups of similar schools with similar philosophies and contexts to plan together, share and collaborate. The intent is to enable higher quality planning and assessment documents while reducing teacher workload. | [VIEW NOW](#)

### New Principals Program

The New Principals Program is ISQ's premier leadership initiative for independent school principals in their first two years. This 18-month, invitation-only program helps new principals meet the demands of their role and accelerate their leadership skills. It offers support, mentoring, and networking opportunities, covering essential leadership areas like school finances, governance, strategic planning, legislation, and policy development. Participants gain skills for complex environments, from board rooms to parent meetings. | [VIEW NOW](#)





### Teaching School Hubs Program **NEW**

In partnership with AISNSW, ISQ's Teaching School Hubs Program offers an employment-based pathway for Education Trainees. While completing their degree, trainees work one day per week at the Teaching Assistant rate, shadowing Mentor Teachers and performing pre-service teacher duties. This program immerses trainees in the school's culture, preparing them for future teaching roles, and provides comprehensive support to both trainees and mentors. | [VIEW NOW](#)

## January

- 22 Be You Postvention Leadership Briefing Webinar 
- 23 Kindy Uplift Forum

### REGIONAL EVENT LOCATION

-  FAR NORTH QLD
-  NORTH QLD
-  MACKAY-WHITSUNDAY
-  CENTRAL QLD
-  WIDE BAY-BURNETT
-  SUNSHINE COAST
-  DARLING DOWNS
-  GOLD COAST
-  HYBRID (IN-PERSON + WEBINAR)
-  WEBINAR (ONLINE)

## February

- 6 Inclusive Education Project Launch
- 6 Kindy Uplift Forum – Toowoomba 
- 10 Leadership Essentials Program – Workshop 1 of Unit 1: The Leadership Mindset
- 11 Kindy Uplift Forum – Townsville 
- 12 Kindy Uplift Forum – Cairns 
- 13 ISQ School Governance Course Module 1: Defining Governance Roles 
- 13 Beginning Teachers The Y Discovery Workshop 1
- 13 ISQ School Governance Course Module 2: Legal Environment and Director Duties 
- 13 ISQ School Governance Course Module 3: Decision-Making Supported by Board Processes 
- 14 Kindy Portal Refresher webinar 
- 14 Beginning Teachers The Y Discovery Workshop 1 
- 17 Kindy Uplift Forum
- 18 Leading Whole School Inclusive Learning Day 1
- 18 Preparing for the NSSAB Compliance Review 
- 19 Leading Whole School Inclusive Learning Day 2
- 20 School Management Module 1: Risk, WHS and Duty of Care 
- 24 International Education Orientation Day
- 25 ISQ School Governance Course Module 4: Financial Reporting 
- 25 International Education Networking Day
- 25 ISQ School Governance Course Module 5: Monitoring Financial Performance 
- 26 New Business Managers Induction
- 26 Curriculum Leaders Forum – Term 1 
- 27 Mathematics Program Launch Webinar 
- 27 Mastering Parent Engagement – 2 Day Masterclass
- 27 An Introduction to Trauma – Part One 
- 27 Mastering Parent Engagement – 2 Day Masterclass

## March

- 4 New Director Induction 
- 12 Behaviour Series – Day 1 
- 12 HR Discussion Group 
- 13 Trauma Integrated Practices in Education – Part Two 
- 14 Mathematics Masterclass
- 17 Leadership Essentials Program – Webinar 1 of Unit 2: My Leadership Brand 
- 19 New Principals 2024–25 | Workshop 3
- 20 ISQ School Governance Course Module 10: Stakeholder Engagement and Networking 
- 20 ISQ School Governance Course Module 11: Board Effectiveness 
- 20 ISQ School Governance Course Module 12: Boardroom Dynamics 
- 21 Aspiring Principals 2024–25 | Workshop 3
- 21 International Education: CRICOS Workshop For School Principals 
- 24 Middle Leaders Coaching Program Webinar 1 
- 25 Practical Training in Media Issues and Crisis Management
- 26 Inclusion in Kindergarten: Individual Learning Plans 
- 26 Inclusive Education Webinar Series 
- 26 ISQ Kindy Network (ISKN) Meeting (Term 1) 
- 26 Parent Engagement Connect | Working with families to address school refusal
- 26 Screens, Social Media & Our Kids 
- 27 ISQ – VET Assessment Validation Day
- 27 School Management Module Elective 1: Managing the risk of Psychosocial Hazards 
- 27 Leadership Essentials Program – Webinar 2 of Unit 2: My Leadership Brand 
- 28 EA Connect Professional Development Day
- 31 Schools Marketing & Communications Networking Event
- 31 Multi-School Organisation Project Session 1 – Unified Leadership

Please check online for updated calendar of events as more are added throughout the year.

## April

- 1 Unleash the Future of Learning with Mac and Compnow
- 2 ICT Managers Forum
- 3 School Management Module 2: Enrolment, Disability and Discrimination 
- 22 ISQ School Governance Course Module 1: Defining Governance Roles 
- 23 ISQ School Governance Course Module 2: Legal Environment and Director Duties 
- 24 ISQ School Governance Course Module 3: Decision-Making Supported by Board Processes 
- 28 International Education Hot Topic 
- 29 Behaviour Series – Day 2
- 30 Leadership Essentials Program Workshop 2 of Unit 2: My Leadership Brand
- 30 ISQ Kindy Network (ISKN) Meeting Term 2 

## May

- 1 Mastering Parent Engagement Plus
- 1 New Principals 2025–26 | Forum
- 1 Business Managers Briefing 
- 1 Middle Leaders Coaching Program Webinar 2 
- 1 Inclusive Education Webinar Series 
- 6 ISQ School Governance Course Module 4: Financial Reporting 
- 7 ISQ School Governance Course Module 5: Monitoring Financial Performance 
- 7 Navigating P&Fs: Strategies for Effective Collaboration 
- 7 The Power of Two: Enhancing the Chair-Principal Dynamic
- 8 ISQ School Governance Course Module 6: Executive Oversight and Development 
- 8 School Management Module Elective 2: ECEC Operation Essentials 
- 8 Leadership Essentials Program – Webinar 1 of Unit 3: The Leadership Toolkit 
- 8 Polyvagal Theory Applications in the Classroom 

## May continued

- 13 Change name to Strengthening Multi-Level Prevention Systems – Tier 1
- 13 New Director Induction 
- 14 Beginning Teachers Support Program The X Factors Workshop 2
- 14 Using the 2024 Australian Early Development Census (AEDC) – Schools 
- 15 Beginning Teachers Support Program The X Factors Workshop 2 
- 15 Using the 2024 Australian Early Development Census (AEDC) – Early Childhood 
- 15 Masterclass: Unlocking New Revenue Streams
- 15 Black Dog Institute: Youth in Distress
- 16 Executive Leadership: Principals Masterclass 2 – The Emotionally Intelligent CEO – The Science of Emotions
- 19 Middle Leaders Coaching Program Workshop 1 Day 1 (GCI)
- 19 Australian Teaching Assistant Professional Standards for Leaders 
- 20 ER/HR Networking Event
- 20 Harmonise & Innovate: Professional Development for Music Educators
- 21 Curriculum Leaders Forum – Term 2 
- 22 Leadership Essentials Program – Webinar 2 of Unit 3: The Leadership Toolkit 
- 22 VET Assessment Validation Day
- 25 Designing a pedagogical model to suit your context
- 27 ISQ NCCD Moderation – Gold Coast 
- 28 ISQ Kindy Network (ISKN) Meeting (Term 2) 
- 28 Respectful Relationships Education In Action
- 29 Curriculum Leaders Forum – Term 2 – Rockhampton 
- 29 Mastering Parent Engagement Plus
- 29 ISQ School Governance Course Module 7: Strategic Planning 
- 29 ISQ School Governance Course Module 8: Risk Management Framework 
- 29 ISQ School Governance Course Module 9: Compliance and Policy Framework 
- 30 International Education Networking Day

## June

- 2 Whole School Approach to Student Wellbeing
- 3 ISQ NCCD Moderation
- 3 ISQ School Governance Course Module 10: Stakeholder Engagement and Networking 
- 4 ISQ School Governance Course Module 11: Board Effectiveness 
- 4 Middle Leaders Coaching Program Workshop 1 Day 2 (GCI)
- 4 Strengthening Parent Engagement through Effective Communication 
- 5 ISQ School Governance Course Module 12: Boardroom Dynamics 
- 5 School Management Module 3: Complaints, Whistleblowers and School Investigations 
- 5 Curriculum Leaders Forum – Term 2 – Hervey Bay 
- 5 Leadership Essentials Program – Workshop Unit 3: The Leadership Toolkit
- 5 ISQ NCCD Moderation – Sunshine Coast 
- 5 Inclusive Education Webinar Series 
- 9 New Principals 2024–25 | Workshop 4
- 10 Executive Leadership: Principals Roundtable for Small and Special Assistance Schools
- 11 Aspiring Principals 2024–25 | Workshop 4
- 11 ISQ NCCD Moderation – Rural and Remote 
- 12 Curriculum Leaders Forum – Term 2 – Cairns 
- 12 Privacy & Records Workshop 
- 12 Trauma-Informed Responses to Harmful Sexual Behaviour 
- 16 Practical Training in Media Issues and Crisis Management
- 17 Strengthening Multi-Level Prevention Systems – Tier 1
- 18 ISQ – School RTO 2 Day Workshop
- 18 Be You Postvention Leadership Briefing for Special and Special Assistance Schools 
- 18 HR Discussion Group 
- 19 School Management Module 4: The Theory and Practice of Strategic Planning 
- 19 How Learning Happens Masterclass
- 24 Be You Postvention Leadership Briefing Webinar 

### Stay Informed

Ensure you never miss an event.

Subscribe to ISQ's professional learning and events email today.

SUBSCRIBE NOW



## July

- 1 Aspiring Principals 2025–26 | Residential
- 16 ISQ Kindy Network (ISKN) Meeting (Term 3) <sup>W</sup>
- 17 Bandscales for Aboriginal and Torres Strait Islander EAL/D Learners Training – 2 Day Intensive
- 22 Be You Postvention Workshop and Networking Lunch
- 22 ISQ School Governance Course Module 4: Financial Reporting <sup>W</sup>
- 23 ISQ School Governance Course Module 5: Monitoring Financial Performance <sup>W</sup>
- 23 Strengthening Multi-Level Prevention Systems – Tier 2
- 24 ISQ School Governance Course Module 6: Executive Oversight and Development <sup>W</sup>
- 24 Inclusion in Kindergarten: Individual Learning Plans <sup>W</sup>
- 24 Parent Engagement Connect
- 28 Leadership Essentials Program – Workshop 1 of Unit 1: The Leadership Mindset
- 28 Kindy Portal Refresher Webinar <sup>W</sup>
- 28 School RTO Online Summit: Part 1 – Being a Teacher / Trainer of VET in Schools <sup>W</sup>
- 29 Student Wellbeing Forum
- 29 School RTO Online Summit: Part 2 – Supporting School Students through VET Programs <sup>W</sup>
- 30 **Queensland Independent Schools Summit (QISS)** ●
- 30 CRRE Forum <sup>W</sup>
- 30 School RTO Online Summit: Part 3 – Engaging with Key Representatives to Inform Industry Relevance <sup>W</sup>
- 31 School RTO Online Summit: Part 4 – Conducting Evidence-based Assessment and Validation Practices <sup>W</sup>

### REGIONAL EVENT LOCATION

- FAR NORTH QLD
- NORTH QLD
- MACKAY-WHITSUNDAY
- CENTRAL QLD
- WIDE BAY-BURNETT
- SUNSHINE COAST
- DARLING DOWNS
- GOLD COAST
- Ⓜ HYBRID (IN-PERSON + WEBINAR)
- Ⓜ WEBINAR

## August

- 1 School RTO Online Summit: Part 5 – Elevating Effective School RTO Governance and Management Operations <sup>W</sup>
- 4 ESL Bandscales
- 5 ISQ School Governance Course Module 1: Defining Governance Roles <sup>W</sup>
- 5 Student Wellbeing Forum – Gold Coast ●
- 5 Employee Relations and Human Resources Conference
- 6 Employee Relations and Human Resources Conference
- 6 ISQ School Governance Course Module 2: Legal Environment and Director Duties <sup>W</sup>
- 6 CRRE Forum – Gold Coast ●
- 7 ISQ School Governance Course Module 3: Decision-Making Supported by Board Processes <sup>W</sup>
- 7 Mastering Parent Engagement Plus
- 8 Aspiring Principals 2024–25 | Workshop 5
- 8 EA Connect Professional Development Day
- 11 New Principals 2024–25 | Workshop 5
- 14 School Management Module 5: Governance and Legal Compliance <sup>W</sup>
- 18 New Principals 2025–26 | Workshop 1
- 19 New Director Induction <sup>W</sup>
- 19 Student Wellbeing Forum – Sunshine Coast ●
- 20 CRRE Forum – Sunshine Coast ●
- 20 ISQ Kindy Network (ISKN) Meeting (Term 3) <sup>W</sup>
- 21 School Management Module Elective 3: Unpacking International Education <sup>W</sup>
- 21 Leadership Essentials Program - Webinar 1 of Unit 2: My Leadership Brand <sup>W</sup>
- 25 VET Webinar: Engaging in Partnership Agreements with External Providers <sup>W</sup>
- 26 Student Wellbeing Forum – Toowoomba ●
- 27 Middle Leaders Coaching Program: Workshop 3
- 27 CRRE Forum – Toowoomba ●
- 27 Design and Construction Forum
- 28 ISQ School Governance Course Module 7: Strategic Planning <sup>W</sup>
- 28 ISQ School Governance Course Module 8: Risk Management Framework <sup>W</sup>

## August continued

- 28 ISQ School Governance Course Module 9: Compliance and Policy Framework <sup>W</sup>
- 29 Leadership Essentials Program – Webinar 2 of Unit 2: My Leadership Brand <sup>W</sup>

## September

- 1 Cognitive Science and Effective Teaching Practices Masterclass
- 2 Student Wellbeing Forum – Townsville ●
- 3 ISQ Indigenous Boarding On-line Forum <sup>W</sup>
- 3 CRRE Forum – Townsville ●
- 4 Beginning Teachers Support Program Teacher Leadership Workshop 3
- 4 School Management Module 6: Financial Management and Board Reporting <sup>W</sup>
- 5 What good maths teaching looks like
- 8 Leadership Essentials Program Workshop 2 of Unit 2: My Leadership Brand
- 9 ISQ School Governance Course Module 10: Stakeholder Engagement and Networking <sup>W</sup>
- 9 Student Wellbeing Forum – Rockhampton ●
- 10 ISQ School Governance Course Module 11: Board Effectiveness <sup>W</sup>
- 10 CRRE Forum – Rockhampton ●
- 10 Executive Leadership: Principals Masterclass 3 – Change Leadership in Education
- 11 ISQ School Governance Course Module 12: Boardroom Dynamics <sup>W</sup>
- 11 Inclusive Education Webinar Series <sup>W</sup>
- 12 Business Managers Forum
- 15 Transition to School: Supporting children with additional needs
- 16 Strengthening Multi-Level Prevention Systems – Tier 2 <sup>W</sup>
- 17 HR Discussion Group <sup>W</sup>
- 17 Designing a Pedagogical Model to Suit your Context
- 18 Designing a Pedagogical Model to Suit your Context
- 18 Practical Training in Media Issues and Crisis Management
- 22 Aspiring Principals 2025–26 | Workshop 1

## October

- 7 ISQ School Governance Course Module 1: Defining Governance Roles <sup>W</sup>
- 8 Bandscales for Aboriginal and Torres Strait Islander EAL/D Learners Training – Moderation Day
- 8 ISQ School Governance Course Module 2: Legal Environment and Director Duties <sup>W</sup>
- 9 ISQ School Governance Course Module 3: Decision-Making Supported by Board Processes <sup>W</sup>
- 9 Safeguarding Forum
- 10 ER/HR Networking Event
- 13 New Principals 2025–26 | Workshop 2
- 14 Be You Postvention Planning Workshop Review
- 15 ESL Moderation
- 15 Leadership Essentials Program – Webinar 1 of Unit 3: The Leadership Toolkit <sup>W</sup>
- 15 Behaviour Series – Day 1 <sup>W</sup>
- 16 Mastering Parent Engagement Masterclass
- 16 School Management Module 7: Financial Fraud in Schools <sup>W</sup>
- 16 International Education Hot Topic <sup>W</sup>
- 20 ICT Managers Forum
- 21 Curriculum Leaders Forum – Term 4 <sup>W</sup>
- 22 ISQ Kindy Network (ISKN) Meeting <sup>W</sup>
- 23 Mastering Parent Engagement Plus
- 23 Vicarious Trauma: Surviving, Thriving and Reviving <sup>W</sup>
- 27 Youth Mental Health First Aid
- 28 Curriculum Leaders Forum – Term 4 – Bundaberg ●

## October continued

- 28 Schools Marketing & Communications Networking Event
- 29 Executive Leadership: Principals Roundtable for Regional Principals
- 30 Teaching & Learning Showcase 2025 <sup>W</sup>
- 30 Inclusive Education Webinar Series <sup>W</sup>
- 30 Leadership Essentials Program – Webinar 2 of Unit 3: The Leadership Toolkit <sup>W</sup>
- 30 Governance Masterclass <sup>W</sup>
- 30 School Management Module 8: Privacy, Archiving and Copyright <sup>W</sup>
- 31 Aspiring Principals 2025–26 | Workshop 2

## November

- 3 Youth Mental Health First Aid
- 4 New Director Induction <sup>W</sup>
- 5 Strengthening Multi-Level Prevention Systems – Complex Case Collaboration
- 6 Business Managers Briefing
- 6 Behaviour Series – Day 2
- 7 International Education Networking Day
- 11 Curriculum Leaders Forum – Term 4 – Townsville ●
- 11 ISQ School Governance Course Module 4: Financial Reporting <sup>W</sup>
- 12 ISQ School Governance Course Module 5: Monitoring Financial Performance <sup>W</sup>

## November continued

- 13 ISQ School Governance Course Module 6: Executive Oversight and Development <sup>W</sup>
- 17 Leadership Essentials Program Workshop 3 of Unit 3: The Leadership Toolkit
- 18 Curriculum Leaders Forum – Term 4 – Mackay ●
- 20 ISQ School Governance Course Module 7: Strategic Planning <sup>W</sup>
- 20 ISQ School Governance Course Module 8: Risk Management Framework <sup>W</sup>
- 20 ISQ School Governance Course Module 9: Compliance and Policy Framework <sup>W</sup>
- 26 ISQ Kindy Network (ISKN) Meeting – Term 4 <sup>W</sup>
- 26 HR Discussion Group <sup>W</sup>
- 27 ISQ – VET Assessment Validation Day

## December

- 2 ISQ School Governance Course Module 10: Stakeholder Engagement and Networking <sup>W</sup>
- 3 ISQ School Governance Course Module 11: Board Effectiveness <sup>W</sup>
- 4 ISQ School Governance Course Module 12: Boardroom Dynamics <sup>W</sup>

## ISQ CORPORATE RATE – EMPORIUM HOTEL, SOUTH BANK

Are you staying overnight to attend a PD day? ISQ is happy to provide members with access to a special Corporate Rate for accommodation at the Emporium Hotel South Bank.

The Emporium Hotel is located across the road from the ISQ office in South Brisbane and offers a range of hotel services and amenities.

### Rate options:

Sunday – Thursday  
**Vista King Suite** \$262.00 including internet  
**River City King Suite** \$335.00 including internet

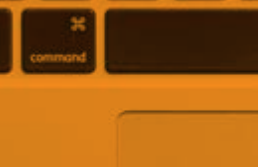
### How to book:

Members and guests will be able to book a room at discounted rates via this link: <https://reservations.travelclick.com/103264?RatePlanId=8219802>

The ISQ Corporate Rate can also be accessed by using the promo code 'ISQLD' when booking on the hotel's website.

Alternatively, you can contact the Hotel's reservations directly on 07 3556 3333 or via [reservations@emporiumhotels.com.au](mailto:reservations@emporiumhotels.com.au)

SPECIAL OFFER



ISQ delivers a wide range of courses and individual modules online. This self-paced mode of learning sustains continuous improvement among all member schools, facilitating greater access to high-quality professional growth and development, without the need for travel.

## Courses include:

- **Aboriginal and Torres Strait Islander Education**
  - Embedding Aboriginal and Torres Strait Islander Perspective in Numeracy
  - Partnering with Local Indigenous Communities Child Protection
- **Child Protection**
  - Child Protection for Teachers
  - Child Protection for Early Childhood Educators and Care Professionals
  - Child Protection for Principals and Board
  - Child Protection for non-Teaching Staff
- **Coaching & Mentoring**
  - Beginning Teachers
  - Becoming a Mentor: Nurturing the Potential of Others
- **Communications**
  - Effective Media Management
- **Curriculum & Assessment**
  - Introduction to Leading Curriculum
- **Differentiation**
  - Differentiating the educational program for students in Years 7 to 10
  - Differentiating the educational program for students in Prep to Year 6
- **Educational Data Course**
  - Using Cohort Data to Improve Learning
  - Strategic Planning with Data
  - Managing Educational Data
  - Data Sources and Types
  - Using Individual Student Data
  - The Case for Educational Data
- **Effective Reading Instruction Course**
  - Oral Language in the Early Years
- **eSafety**
  - eSafety Supporting Digital Wellbeing and Inclusion
  - eSafety Responding and Reporting Online Incidents
- **Funding Applications**
  - Education Support Funding Program
  - KISS Grant Applications
- **Governance**
  - School Business Manager Introduction
- **Governance Finance Course**
  - The Cash Flow Statement
  - The Balance Sheet
  - The Income & Expenditure Statement
  - Ratio Analysis
- **Governance Induction Course**
  - Governance Policies and Processes
  - Governance Roles and Responsibilities
  - Governance – An Independent School Context
- **Inclusive Education**
  - Inclusive Education Webinars
- **International Education**
  - Finding your way around ESOS & CRICOS
- **Leadership**
  - Thriving Through Change
  - Working with Teams
  - Leading Change
- **Microlearning**
  - Conflict Resolution Tips and Techniques
  - How to Have a Difficult Conversation
  - 3 Desk Stretches to Instantly Improve Your Day
- **Parent Engagement**
  - Whole School Approach to Parent Engagement
- **School Improvement**
  - Middle Leadership: Learning to Lead

- **STEM**
  - Are you STEM Ready?
  - Defining, embedding and delivering STEM
  - Implementing STEM and fostering sustainable partnerships
- **Students with Disability**
  - Disability Standards for Education
  - Disability Standards
- **Support**
  - Domestic and Family Violence
- **Supporting Learners' Acquisition of English as a Second Language**
  - Using the ESL Bandscales Levels 4–7
  - Using the ESL Bandscales Levels 1–3
  - Introduction to the NLLIA Bandscales
  - Introduction to English as a Second Language
- **Teacher Aides Working with Students with Disability**
  - Managing student behaviour and supporting self-management
  - Supporting students with disability and learning difficulties
  - Supporting literacy and numeracy development
- **Teacher Quality**
  - Evidencing Highly Accomplished and Lead Practice
- **Teaching & Learning**
  - Introduction to Behaviour Support
  - Leading Online Teaching and Learning
  - Effective Use of Teacher Aides – Considerations for School Leaders
  - Curriculum Leaders – Difficult Conversations
  - Review of 2024 NCCD School Processes
- **VET**
  - Work Experience

Unleash your potential by accessing ISQ's must-have e-Learning courses via **Connect&Learn**.

**Connect&Learn: Course Catalogue**



## Spotlight on Regional Schools

About 40% of independent schools are located in regional or remote Queensland and educate about 26% of all independent school students. ISQ provides in-person events in the following regions:

### Far North Queensland

**12 FEB** Kindy Uplift Forum: Cairns  
**12 JUN** Curriculum Leaders Forum: Cairns

### North Queensland

**11 FEB** Kindy Uplift Forum: Townsville  
**2 SEP** Student Wellbeing Forum: Townsville  
**3 SEP** CRRE Forum: Townsville  
**4 NOV** Curriculum Leaders Forum: Townsville

### Mackay-Whitsunday

**18 NOV** Curriculum Leaders Forum: Mackay

### Central Queensland

**29 MAY** Curriculum Leaders Forum: Rockhampton  
**9 SEP** Student Wellbeing Forum: Rockhampton  
**10 SEP** CRRE Forum: Rockhampton

### Wide Bay-Burnett

**5 JUN** Curriculum Leaders Forum: Hervey Bay  
**28 OCT** Curriculum Leaders Forum: Bundaberg

### Sunshine Coast

**5 JUN** ISQ NCCD Moderation: Sunshine Coast  
**19 AUG** Student Wellbeing Forum: Sunshine Coast  
**20 AUG** CRRE Forum: Sunshine Coast

### Darling Downs

**6 FEB** Kindy Uplift Forum: Toowoomba  
**26 AUG** Student Wellbeing Forum: Toowoomba  
**27 AUG** CRRE Forum: Toowoomba

### Gold Coast

**27 MAY** ISQ NCCD Moderation: Gold Coast  
**30 JUL–1 AUG** QISS: Gold Coast  
**5 AUG** Student Wellbeing Forum: Gold Coast  
**6 AUG** CRRE Forum: Gold Coast



# Member-focused service offering

The ISQ team is here to deliver the very best services, knowledge, advice, and support to member schools, so they can excel for their students and school community. Made up of a cohort of dedicated and passionate professional staff, ISQ puts members and the sector first in everything it does.

## Supporting Schools

### New School Support

ISQ recognises that complying with the full range of Non-State Schools Accreditation Board (NSSAB) requirements to set up a new school is a complex process. ISQ's School Services team can provide prospective schools with a range of support related to accreditation and compliance. | [FIND OUT MORE](#)

### Indigenous Education

Aboriginal and Torres Strait Islander Education provides ongoing support to all schools to ensure that the embedding of Indigenous perspectives permeates all aspects of schooling from enrolment processes, support, professional development, funding, curriculum, strategy, and advocacy. Schools with high numbers of First Nations student enrolments receive additional tailored support to meet specific contextual needs. [FIND OUT MORE](#)

### Early Childhood Education and Care

ISQ provides support and advice to assist members to deliver quality, inclusive early childhood education and care (ECEC) programs. ISQ's services in the ECEC space include administration of kindergarten funding programs, support to meet regulatory and legislative obligations, and professional development. | [FIND OUT MORE](#)

### International Education

ISQ is committed to supporting schools to engage globally and deliver quality international education programs. ISQ support covers legislative and industry compliance, CRICOS registration, students on visas, opportunities for student recruitment, professional development, and internationalisation of schooling and global citizenship education, including sister school, exchange and other international education programs.

[FIND OUT MORE](#)

### ICT Support

In 2024, ISQ established the ICT Managers Advisory Committee, representing the diverse range of member schools across Queensland. This committee will play a crucial role in enhancing communication between ISQ and its members, addressing specific ICT support needs. Additionally, ISQ has partnered with several new ICT providers to help members secure the best prices and services. ISQ and the ICT Managers Advisory Committee are committed to supporting members throughout 2025 | [FIND OUT MORE](#)

## Employee Relations

ISQ provides comprehensive employee relations advice and assistance to authorised member school leaders, to assist in the complex area of employee relations management. Advice and support can be offered in areas including enterprise bargaining, interpretation and compliance, Awards and Enterprise Agreements, letters of offer/employment contracts, managing misconduct and underperformance, termination of employment, restructure and redundancy processes and Fair Work Commission matters. | [FIND OUT MORE](#)

## Inclusive Education

ISQ provides information on supporting students with additional needs, differentiated teaching and learning, NCCD, as well as resources and services to support staff and student wellbeing, including behaviour support. ISQ's Learning Support Reviews assist schools to enhance their structure for supporting students with additional needs, including those with a disability. Member schools can access targeted advice so they can address student needs, and support the school to identify priority areas for improvement. | [FIND OUT MORE](#)

## Communications and Crisis Management

The way a school crafts and presents the story of its education mission and values matters. ISQ can help member schools prepare and respond to crises and create authentic messages to share with current and prospective members of your school community. ISQ provides a range of services and professional development events to support member schools in areas such as proactive and reactive media relations, school marketing and communications. | [FIND OUT MORE](#)

## Education Services and Support

### Teaching And Learning Reviews

ISQ's Education Services Review program supports schools in developing their improvement agendas. This service provides high quality, independent feedback to schools against established benchmarks in the areas of leadership, teaching & learning, quality curriculum and community. | [FIND OUT MORE](#)

### Vocational Education and Training

ISQ offers support to its member schools who deliver vocational education and training (VET) either as a school registered training organisation (RTO) or in partnership with external providers. Schools work with ISQ staff with extensive experience in VET delivery and regulation, enabling guidance and professional learning to assist compliant and quality assured VET programs for senior school students. ISQ also offers two relevant VET funding incentive programs. | [FIND OUT MORE](#)

## Curriculum, Teaching and Learning

ISQ provides tailored curriculum and assessment support and bespoke curriculum audits and reviews. Support is also offered to Prep – Year 10 teachers to develop high-quality curriculum and assessment through numerous online webinars and other professional learning offerings. | [FIND OUT MORE](#)

## School Leadership

### Governance

ISQ offers governance advice and training specifically addressing the needs of independent school governors. This service offering allows school governors to be confident that they are able to meet the compliance obligations of independent schools, understand personal liability as a director, master the skills needed to set the strategic direction of the school and build a toolkit of frameworks and processes to assess and monitor risk and set targeted policies. | [FIND OUT MORE](#)

### Executive and Senior Leadership Reviews

ISQ facilitates independent leadership and performance reviews of senior executives. For principals, this often occurs towards the mid-point and conclusion of their contract to support growth and development and contract renewal, respectively. ISQ uses a comprehensive, future-focused and developmental approach working in close collaboration with school boards and principals. | [FIND OUT MORE](#)

### Regulatory Guidance

ISQ's comprehensive support encompasses a wide range of services aimed at elevating member schools' compliance with the obligations prescribed by the regulatory framework in which they operate. Through industry updates, provision of template policies, training sessions, and personalised advice to school leaders, we empower independent schools to navigate the regulatory landscape with confidence. | [FIND OUT MORE](#)

Access more services via  
ISQ's Member Hub



# Queensland Independent Schools SUMMIT

FUTURE GROWTH,  
PROPELLING  
SCHOOL LEADERS

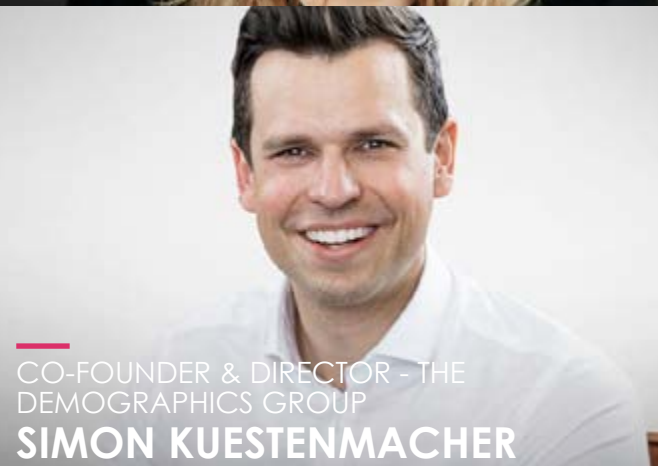
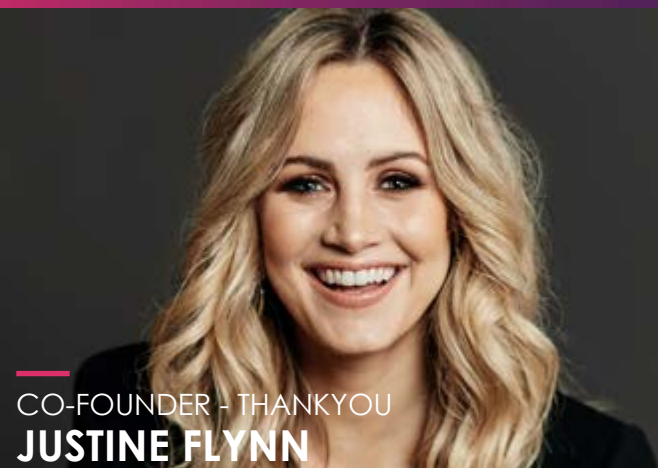
**30 July – 1 August 2025**  
**Sheraton Grand Mirage Resort, Gold Coast**

Join us for the Queensland Independent Schools Summit (QISS), a premier leadership event tailored specifically for independent school leaders from across Australia and abroad to enhance their leadership skills and strategies.

**REGISTER  
NOW**

**Day one** of the conference will focus on the theme of 'RISK', featuring keynote speakers such as Dr. Richard Harris SC OAM, who will discuss navigating risk and leading from the front, and Justine Flynn, who will address the importance of personal and team wellbeing to avoid burnout.

**On day two**, the theme shifts to 'GROWTH', with Dr. Catriona Wallace exploring transformational leadership and informative decision-making for growth, and Simon Kuestenmacher discussing population and economic growth and the future of education.



## Connect with us

Connect with Independent Schools Queensland and take your professional discussions and networking to the social space.

Join more than 230 schools, 8,000 educators, school leaders, parents and the wider community on ISQ's four social networks.

**Are you  
following  
us?**

Follow us to stay up to date with education news and policy insights, ISQ's latest research and more.



**INDEPENDENT SCHOOLS QUEENSLAND LTD**  
ACN 614 893 140 ABN 88 662 995 577

### Disclaimer:

The information contained in this publication is to the best of our knowledge and belief correct at the date of publication. However, no warranty or guarantee is or can be given by Independent Schools Queensland or any member of its staff, and no liability is or can be accepted for any loss or damage resulting from any person relying on or using the information contained in this publication.



**Independent Schools Queensland**  
Level 7, 189 Grey Street, South Brisbane Q 4101  
P (07) 3228 1515 E office@isq.qld.edu.au  
[www.isq.qld.edu.au](http://www.isq.qld.edu.au)